



PARTS CATALOG

Published

2008/7 (Jul.)

0CNP2-G00200

SPECIFICATIONS

Item		Model	YSR100T	YSR100TS
Body dimensions	Overall length	(mm)	1472	
	Overall width	(mm)	810	
	Overall height	(mm)	1120	
Overall weight		(kg)	142	155
Engine	Type		Air-cooled gasoline engine	
			GE90NJS	GE90NJSE
	Displacement	(cc.)	365	
	Max. output	(PS/r.p.m.)	9.0 / 1900	
	Start method		Recoil starter	Recoil starter Electric starter
Battery			—	YUASA Y60-S4N
			—	Or equiv. to 12V 35Ah(20HR)
Traveling unit	Crawler width	(mm)	150	
	Traveling transmission		Friction disc type	
	Speed change		4-forward and 1-reverse	
Snow throwing section	Snow throwing system		2-stage auger and blower type	
	Auger dia.	(mm)	350	
	Blower dia.	(mm)	298	
Snow throwing capacity	Snow cutting width	(mm)	800	
	Snow cutting height	(mm)	515	
	Snow throwing capacity	(t/h)	50	
	Snow throwing distance	(m)	17	

NOTE : Given Specifications may be altered for improvement, etc. without prior notice.

CONTENTS

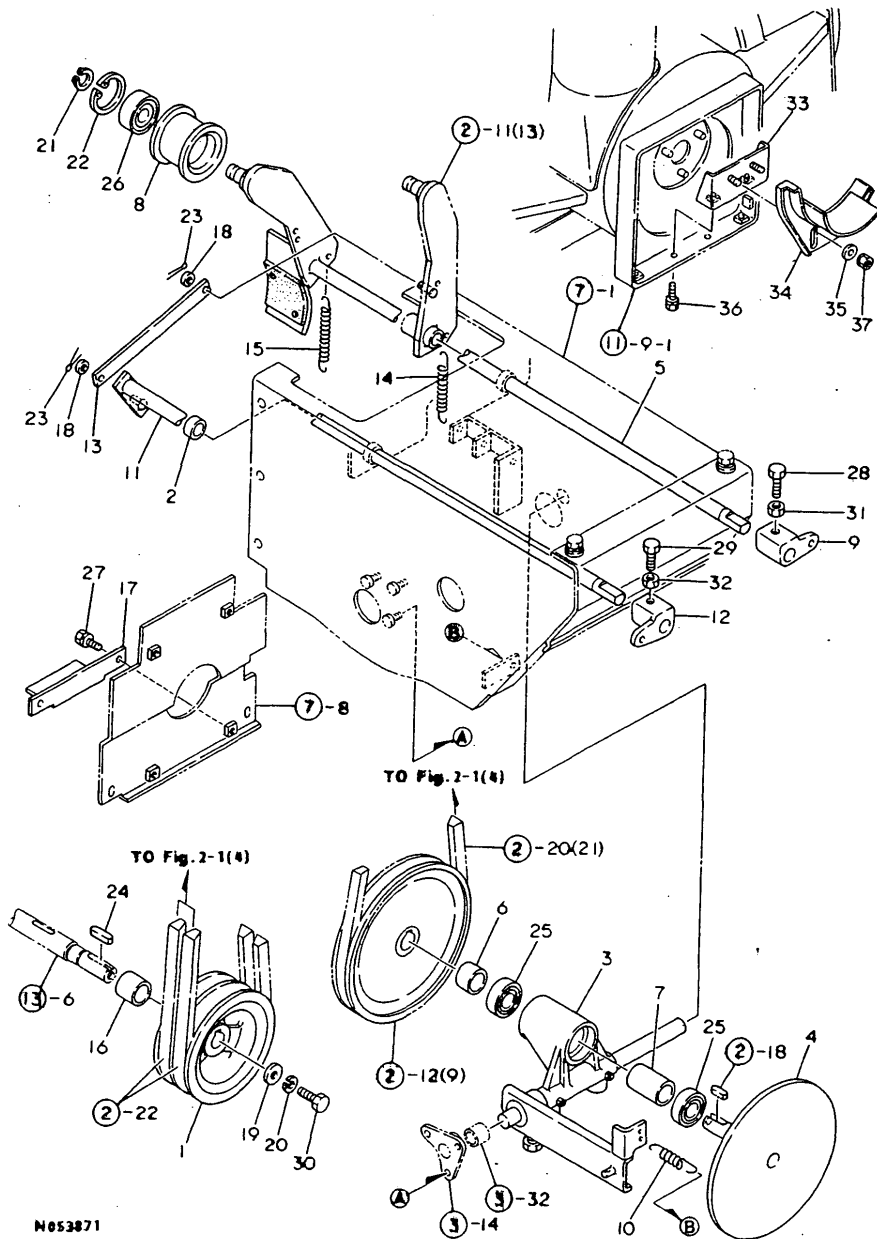
MODEL : YSR100TE(HL) ()
PC NO : 0CNP2-G00200

Fig.No.	GROUP NAME
	TRANSMISSION
1.	BELT TRANSMISSION 1
2.	BELT TRANSMISSION 2
3.	TRAVELING DRIVE
	CONTROL UNIT
4.	CONTROL 1
5.	CONTROL 2
	CHASSIS CRAWLER
6.	CHASSIS 1
7.	CHASSIS 2
8.	CRAWLER
	ELECT,PARTS
9.	ENGINE & ELECTRICAL PARTS
	LABELS UNIT
10.	MARKS
	SNOWREMOVING UNIT
11.	SNOW REMOVING FRAME
12.	CHUTE
13.	GEAR CASE
14.	AUGER
15.	BLOWER
	ACCESSORIES SECTION
16.	TOOLS
17.	ACCESSORIES

Fig.No.	GROUP NAME
	LABEL UNIT
18.	MARKS 13(ADDED GROUP)
	ELECT,PARTS
19.	ENGINE & ELECTRICAL PARTS 3(ADDED GROUP)

Fig.1. BELT TRANSMISSION 1

1. BELT TRANSMISSION I



N653871

OCNP2-G00200 1. BELT TRANSMISSION 1

(A)=YSR100TE
(B)=YSR100TEHL
(C)=YSR100TEL

(D)=YSR100TSE(H)
(E)=
(F)=

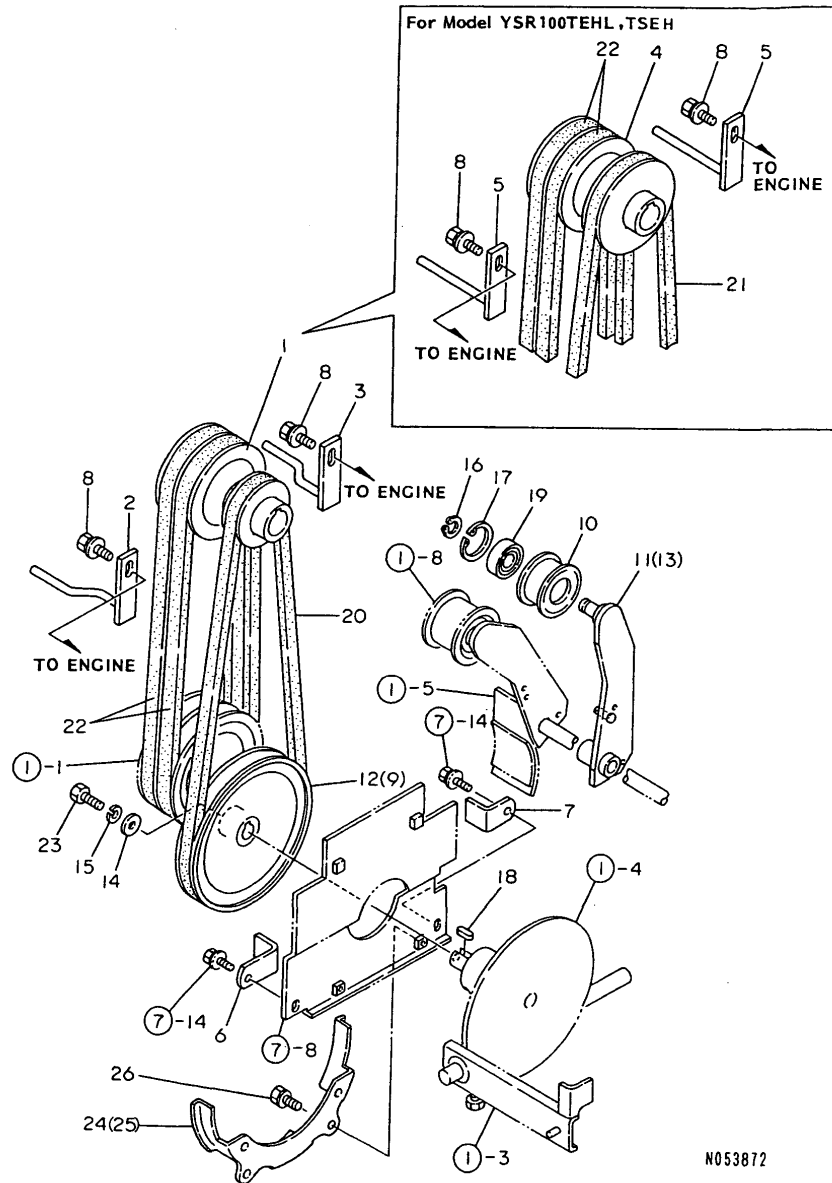
REF.	LEV.	PARTS NO.	DESCRIPTION	QTY						I	R
				(A)	(B)	(C)	(D)	(E)	(F)		
1	1	1N1960-12000	PULLEY 120BW	1	1	1	1				
2	1	1N1960-12050	COLLAR 13X20X8	1	1	1	1				
3	1	1N1720-12071	HOUSING COMP.,CLUTCH	1	1	1	1				
4	1	1N1720-12080	SHAFT COMPL.,PULLEY	1	1						
4-1	1	1N1720-12081	SHAFT COMP.,PULLEY	1	1	1	1				N
		(A=F810001) (B=F810001)									
5	1	1N1960-12100	SHAFT,AUGER TENSION	1	1						
5-1	1	1N1960-12101	SHAFT,AUGER TENSION	1	1	1	1				N
		(A=F810001) (B=F810001)									
6	1	1N1720-12110	COLLAR 18X25X16	1	1	1	1				
7	1	1N1570-12200	COLLAR 18X25X40	1	1	1	1				
8	1	1N1720-12200	PULLEY 60,WD.TENSION	1	1	1	1				
9	1	1N1710-12240	PLATE A,CAM	1	1	1	1				
10	1	1N1570-12280	SPRING,CLUTCH	1	1	1	1				
11	1	1N1720-12300	SHAFT,SIDE TENSION	1	1	1	1				
12	1	1N1710-12320	PLATE B,CAM	1	1	1	1				
13	1	1N1960-12060	PLATE,CONNECTING	1	1	1	1				
14	1	1N1710-12400	SPRING B,RETURN	1	1	1	1				
15	1	1N1721-12560	SPRING C,RETURN	1	1	1	1				
16	1	1N1721-12700	COLLAR	1	1	1	1				
17	1	1N1710-82250	BELT,GUIDE	1	1						Z
		(A=F810001) (B=F810001)									
18	1	22117-060000	WASHER 6	2	2	2	2				
19	1	22157-080000	WASHER 8	1	1	1	1				
20	1	22217-080000	SPRING WASHER 8	1	1	1	1				
21	1	22242-000170	CIRCLIP 17	1	1	1	1				
22	1	22252-000400	CIRCLIP 40	1	1	1	1				
23	1	22417-200120	COTTER PIN 2.0X12	2	2	2	2				
24	1	22512-050300	KEY 5X 30	1	1	1	1				
25	1	24104-060034	BALL BEARING	2	2	2	2				
26	1	24107-062030	BEARING 6203ZZ	1	1	1	1				
27	1	26016-060124	BOLT 6X12 W/L.W.	2	2	2	2				Z
		(A=F810001) (B=F810001) (C=F810001) (D=F810001)									
28	1	26116-080202	BOLT M 8X 20 PLATED	1	1	1	1				
29	1	26116-080202	BOLT M 8X 20 PLATED	1	1	1	1				
30	1	26116-080252	BOLT M 8X 25 PLATED	1	1	1	1				
31	1	26717-080002	NUT 8	1	1	1	1				
32	1	26717-080002	NUT 8	1	1	1	1				
33	1	1N1711-13200	STAY,GUIDE	1	1	1	1				W
		(A=F810001) (B=F810001)									
33-1	1	1N1711-13201	STAY,GUIDE	1	1	1	1				R
		(A=F81XXXX) (B=F81XXXX) (C=F81XXXX) (D=F81XXXX)									
34	1	1N1960-12450	GUIDE COMP.,PULLEY	1	1	1	1				W
		(A=F810001) (B=F810001)									
35	1	22137-080000	WASHER 8, POLISHED	2	2	2	2				W
		(A=F810001) (B=F810001)									
36	1	26016-080162	BOLT M 8X 16	2	2	2	2				W
		(A=F810001) (B=F810001)									
37	1	26051-080002	NUT M 8	2	2	2	2				W
		(A=F810001) (B=F810001)									

Fig.2. BELT TRANSMISSION 2

(A)=YSR100TE
(B)=YSR100TEHL
(C)=YSR100TEL

(D)=YSR100TSE(H)
(E)=
(F)=

2. BELT TRANSMISSION 2

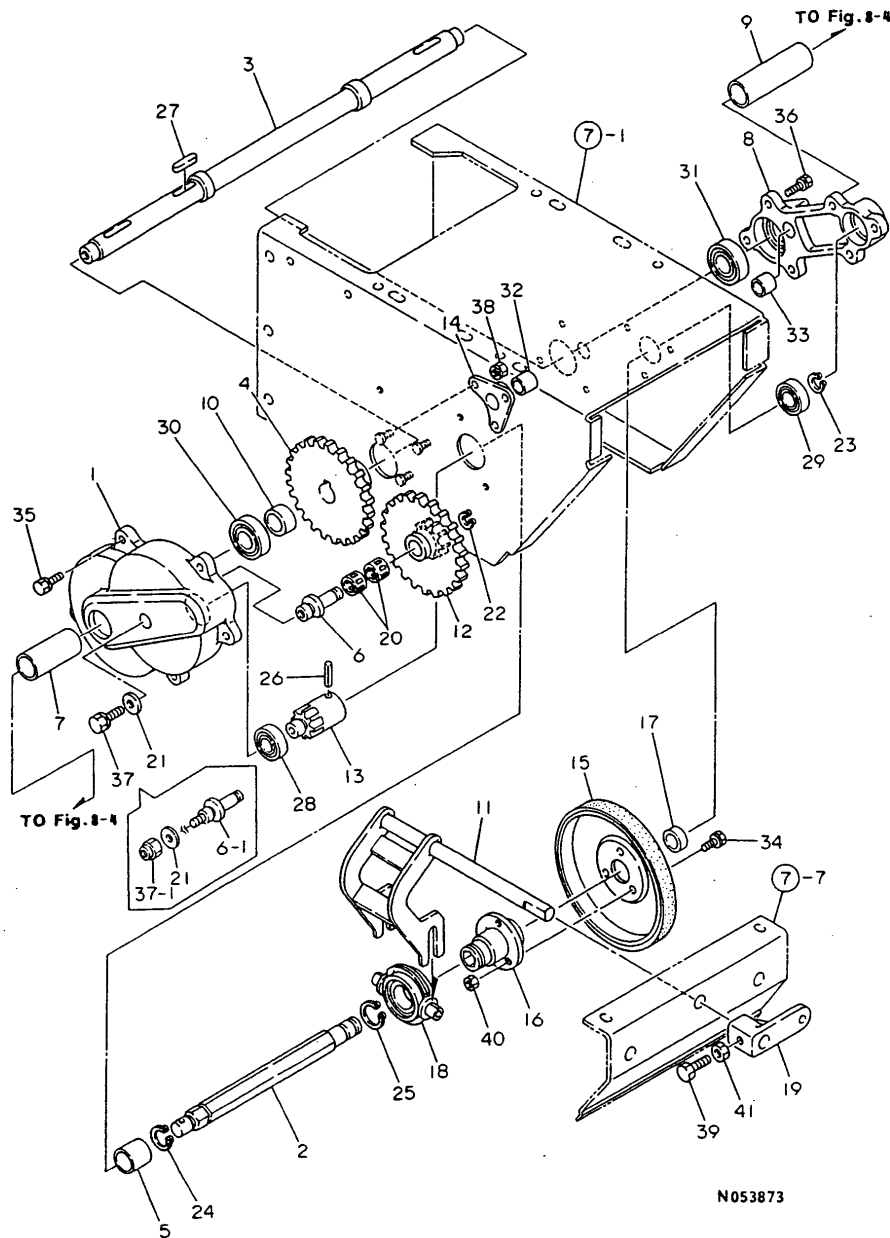


REF.	LEV.	PARTS NO.	DESCRIPTION	Q'TY						I	R
				(A)	(B)	(C)	(D)	(E)	(F)		
1	1	1N1960-12010	PULLEY,ENGINE	1	1	1					
2	1	1N1960-12150	RETAINER A,BELT	1		1	1				
3	1	1N1960-12170	RETAINER B,BELT	1		1	1				
4	1	1N1960-12250	PULLEY H,ENGINE		1		1				1
5	1	1N1960-12280	RETAINER H,BELT		2		2				1
6	1	1N1721-13150	GUIDE 80EL,BELT	1	1						Z
		(A=F810001) (B=F810001)									
7	1	1N1721-13160	GUIDE 80ER,BELT	1	1						Z
		(A=F810001) (B=F810001)									
8	1	26018-080204	BOLT M 8X 20	2	2	2	2				
9	1	1N1711-12030	PULLEY 160A COMPL		1		1				1
10	1	1N1711-12200	PULLEY,TENSION	1	1	1	1				
11	1	1N1960-12200	ARM,RUNNING TENSION	1		1	1				
12	1	1N1721-12250	PULLEY 165A COMPL.	1		1	1				
13	1	1N1960-12350	ARM H,RUN'G TENSION		1		1				1
14	1	22157-080000	WASHER 8	1	1	1	1				
15	1	22217-080000	SPRING WASHER 8	1	1	1	1				
16	1	22242-000150	CIRCLIP 15	1	1	1	1				
17	1	22252-000350	CIRCLIP 35	1	1	1	1				
18	1	22512-050150	KEY 5X 15	1	1	1	1				
19	1	24107-062020	BEARING 6202ZZ	1	1	1	1				
20	1	25122-003701	V-BELT	1		1	1				
21	1	25122-003801	V-BELT A 38H		1		1				1
22	1	25123-003201	V-BELT	2	2	2	2				
23	1	26116-080252	BOLT M 8X 25 PLATED	1	1	1	1				
24	1	1N1960-12400	PULLEY 165A COMPL.	1		1	1				W
		(A=F810001)									
25	1	1N1710-82251	GUIDE,BELT		1		1				W 1
		(B=F810001)									
26	1	26018-060124	BOLT M 6X 12	2	2	2	2				W
		(A=F810001) (B=F810001) (C=F810001) (D=F810001)									

Remarks
(1)EXCLUSIVE FOR YSR100TEHL,TSEH.

Fig.3. TRAVELING DRIVE

3. TRAVELING DRIVE



OCNP2-G00200 3. TRAVELING DRIVE

(A)=YSR100TE
(B)=YSR100TEHL
(C)=YSR100TEL

(D)=YSR100TSE(H)
(E)=
(F)=

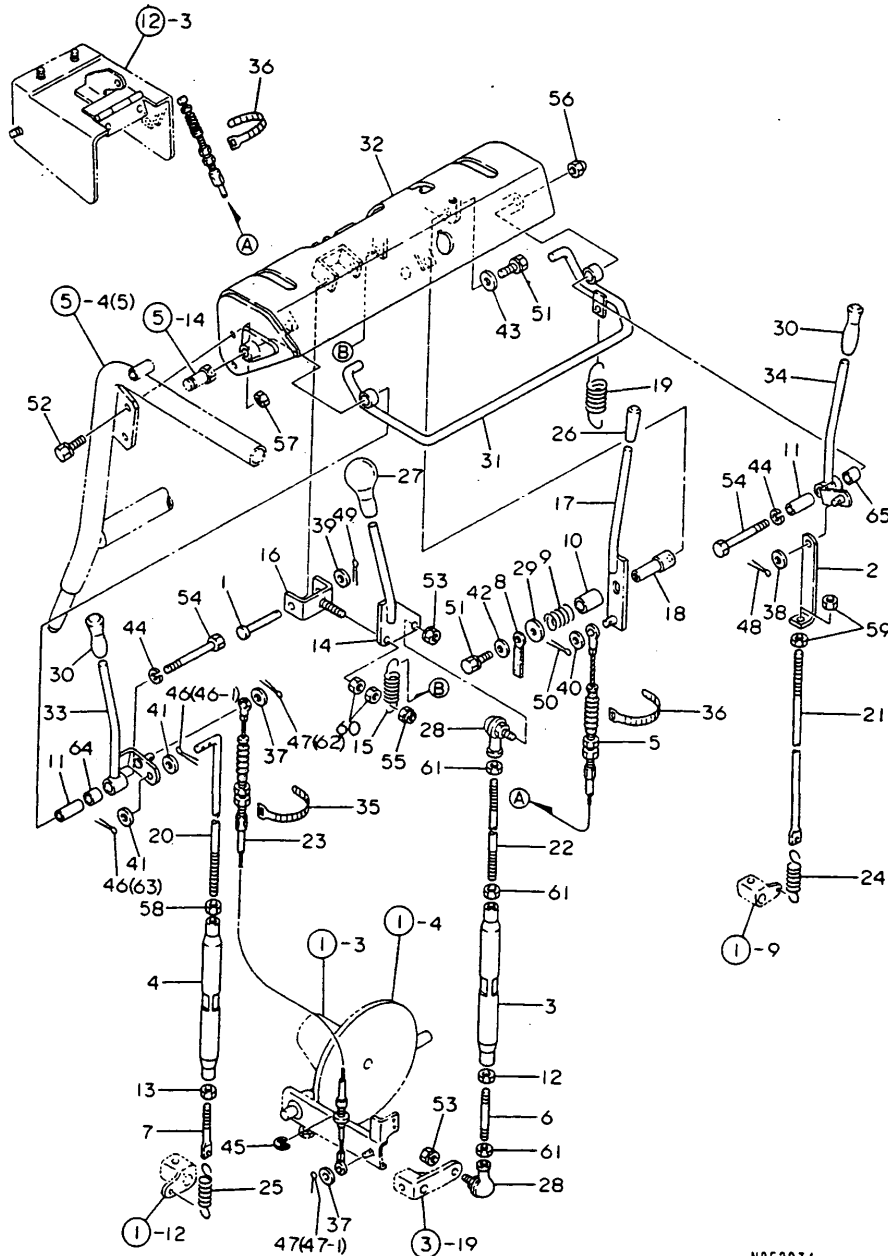
REF.	LEV.	PARTS NO.	DESCRIPTION	QTY						I	R
				(A)	(B)	(C)	(D)	(E)	(F)		
1	1	1N1710-21001	CASE,REDUCTION GEAR	1	1	1	1				
2	1	1N1721-21000	SHAFT.SLIDE	1	1						
2-1	1	1N1721-21001	SHAFT,SLIDE	1	1	1	1				S
3	1	(A=F810001) 1N1960-21000	SHAFT COMP.,DRIVE	1	1	1	1				
4	1	(B=F810001) 1N1710-21010	GEAR,SPUR	1	1	1	1				
5	1	1N1721-21010	COLLAR	1	1	1	1				
6	1	1N1710-21021	SHAFT,NEEDLE	1	1						
6-1	1	1N1710-21022	SHAFT,NEEDLE	1	1	1	1				N
7	1	(A=F810001) 1N1960-21050	COLLAR 21X27X61	1	1	1	1				
8	1	(B=F810001) 1N1720-21061	CASE,BEARING	1	1						
8-1	1	1N1720-21062	CASE,BEARING	1	1	1	1				S
9	1	(A=F810001) 1N1960-21060	COLLAR 21X27X87	1	1	1	1				
10	1	(B=F810001) 1N1570-21070	COLLAR 21X27X13	1	1	1	1				
11	1	1N1720-21071	LEVER,CHANGE	1	1	1	1				
12	1	1N1570-21090	GEAR,2-STAGE SPUR	1	1	1	1				
13	1	1N1570-21100	PINION	1	1						
13-1	1	1N1720-21240	PINION	1	1	1	1				N
14	1	(A=F810001) 1N1570-21170	FLANGE	1	1	1	1				
15	1	(B=F810001) 1N1570-21200	PLATE,FRICITION	1	1	1	1				
16	1	1N1720-21210	SEAT,FRICT'N PL.MTG.	1	1						
16-1	1	1N1720-21211	SEAT,FRICT'N PL.MTG.	1	1	1	1				S
17	1	(A=F810001) 1N1720-21230	COLLAR 15X22X6	1	1						
17-1	1	(B=F810001) 1N1720-21231	COLLAR 15X25X10	1	1	1	1				S
18	1	(A=F810001) 1N1570-21300	SLIDER,CLUTCH	1	1	1	1				
19	1	(B=F810001) 1N1710-21320	PLATE C,CAM	1	1	1	1				
20	1	1N1570-21600	BEARING	2	2	2	2				
21	1	22157-080000	WASHER 8	1	1	1	1				
22	1	22242-000120	CIRCLIP 12	1	1	1	1				
23	1	22242-000150	CIRCLIP 15	1	1	1	1				
24	1	22242-000190	CIRCLIP 19	1	1	1	1				
25	1	22242-000250	CIRCLIP 25S	1	1	1	1				
26	1	22351-060025	SPRING PIN 6X25	1	1	1	1				
27	1	22512-050300	KEY 5X 30	1	1	1	1				
28	1	24104-060024	BALL BEARING 6002UU	1	1						
28-1	1	24104-062024	BALL BEARING	1	1	1	1				S
29	1	(A=F810001) 24104-060024	BALL BEARING 6002UU	1	1	1	1				
30	1	(B=F810001) 24104-060044	BALL BEARING	1	1	1	1				
31	1	24104-060044	BALL BEARING	1	1	1	1				
32	1	24550-015150	BUSH 15X15	1	1	1	1				
33	1	24550-015150	BUSH 15X15	1	1	1	1				
34	1	26016-060164	BOLT 6X16 W/L.W.	3	3	3	3				
35	1	26016-060204	BOLT M 6X 20	5	5	5	5				
36	1	26016-060204	BOLT M 6X 20	6	6	6	6				
37	1	26016-080204	BOLT M 8X 20	1	1						

Fig.4. CONTROL 1

4. CONTROL 1

(A)=YSR100TE
(B)=YSR100TEHL
(C)=YSR100TEL

(D)=YSR100TSE(H)
(E)=
(F)=



N053874

REF.	LEV.	PARTS NO.	DESCRIPTION	QTY						I	R
				(A)	(B)	(C)	(D)	(E)	(F)		
1	1	1N1710-32150	RIVET 6X55	1	1	1	1				
2	1	1N1710-32280	ROD,AUGER	1	1	1	1				
3	1	1N1570-32290	TURNBUCKLE	1	1	1	1				
4	1	1N1570-32290	TURNBUCKLE	1	1	1	1				
5	1	1N1721-34140	WIRE B,CHUTE ADJUST.	1	1	1	1				
6	1	1N1570-32320	ROD B,CHANGE LEVER	1	1	1	1				
7	1	1N1710-32380	BOLT 8X100 W/PIPE	1	1	1	1				
8	1	1N1710-32600	CLAMP 8X70	1	1	1	1				
9	1	1N1570-32760	SPRING B 27X42	1	1	1	1				
10	1	1N1570-32770	COLLAR 13X20X27	1	1	1	1				
11	1	1N1710-32851	COLLAR	2	2	2	2				
11-1	1	1N1710-32852	COLLAR	2	2	2	2				N
(A=F81XXXX) (B=F81XXXX) (C=F81XXXX) (D=F81XXXX)											
12	1	1N1570-32950	NUT 8	1	1	1	1				
13	1	1N1570-32950	NUT 8	1	1	1	1				
14	1	1N1710-32960	LEVER,CHANGE	1	1	1	1				
15	1	1N1710-32980	SPRING B,CHG.LEVER	1	1	1	1				
16	1	1N1710-33000	YOKE B,CHANGE	1	1	1	1				
17	1	1N1710-33050	LEVER,CHUTE ADJUST'G	1	1	1	1				
18	1	1N1710-33080	SHAFT 12X37	1	1	1	1				
19	1	1N1710-33150	SPRING,SAFETY LEVER	1	1						
19-1	1	1N1710-33151	SPRING,SAFETY LEVER	1	1	1	1				N
(A=F810001) (B=F810001)											
20	1	1N1711-35200	BOLT E	1	1	1	1				
21	1	1N1711-35210	BOLT	1	1						
21-1	1	1N1711-35211	BOLT E W/PIPE	1	1	1	1				N
(A=F810001) (B=F810001)											
22	1	1N1711-35220	ROD E,CHANGE LEVER	1	1	1	1				
23	1	1N1960-32110	WIRE E,CLUTCH	1	1	1	1				
24	1	1S0139-42150	SPRING A 18X66	1	1	1	1				
25	1	1S0139-42150	SPRING A 18X66	1	1						
25-1	1	1N1960-32150	SPRING 18X90	1	1						N
(A=F810001) (B=F810001)											
25-2	1	1S0139-42150	SPRING A 18X66	1	1	1	1				S
(A=F810001) (B=F810001)											
26	1	1A1140-58050	GRIP, STAND	1	1	1	1				
27	1	1A1040-58160	GRIP, LEVER	1	1	1	1				
28	1	1S6002-61160	BALL 8,LINK	2	2	2	2				
29	1	1F1150-64270	WASHER 7X30X2,PLAIN	1	1	1	1				
30	1	1E6025-65310	GRIP. CLUTCH LEVER	2	2	2	2				
31	1	1N1710-82081	SAFETY LEVER	1	1						
31-1	1	1N1710-82082	LEVER COMP.,INTERLOC	1	1	1	1				N
(A=F810001) (B=F810001)											
32	1	1N1710-82401	BOX E COMP.,CONTROL	1	1	1	1				
33	1	1N1710-82421	LEVER,SIDE CLUTCH	1	1	1	1				
33-1	1	1N1710-82422	LEVER, DRIVE CLUTCH	1	1	1	1				S
(A=F81XXXX) (B=F81XXXX) (C=F81XXXX) (D=F81XXXX)											
34	1	1N1710-82441	LEVER,AUGER CLUTCH	1	1	1	1				
34-1	1	1N1711-35470	LEVER, AUGER CLUTCH	1	1	1	1				S
(A=F81XXXX) (B=F81XXXX) (C=F81XXXX) (D=F81XXXX)											
35	1	1E6460-83400	BAND 100	1	1	1	1				

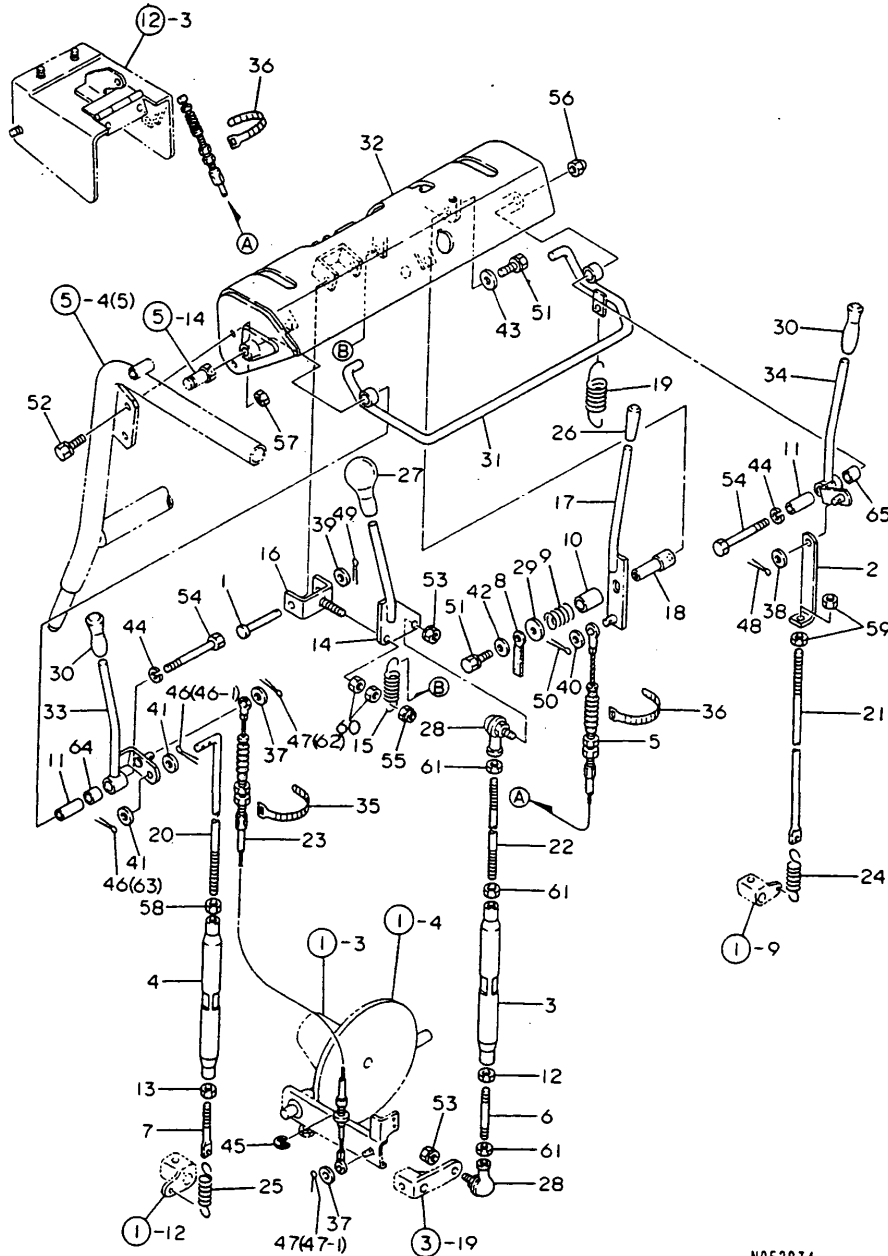
N:Old $\xrightarrow{\text{Yes}}$ New, Q:Old $\xrightarrow{\text{No}}$ New, R:Old $\xrightarrow{\text{Yes}}$ New, S:Old $\xrightarrow{\text{No}}$ New, W:Add, Z:Discontinued, F:Interchangeable by set, K:Q'ty Change
 ++ CONTINUE ++
 (C)Copy Rights YANMAR CO.,LTD.

Fig.4. CONTROL 1

(A)=YSR100TE
(B)=YSR100TEHL
(C)=YSR100TEL

(D)=YSR100TSE(H)
(E)=
(F)=

4. CONTROL 1

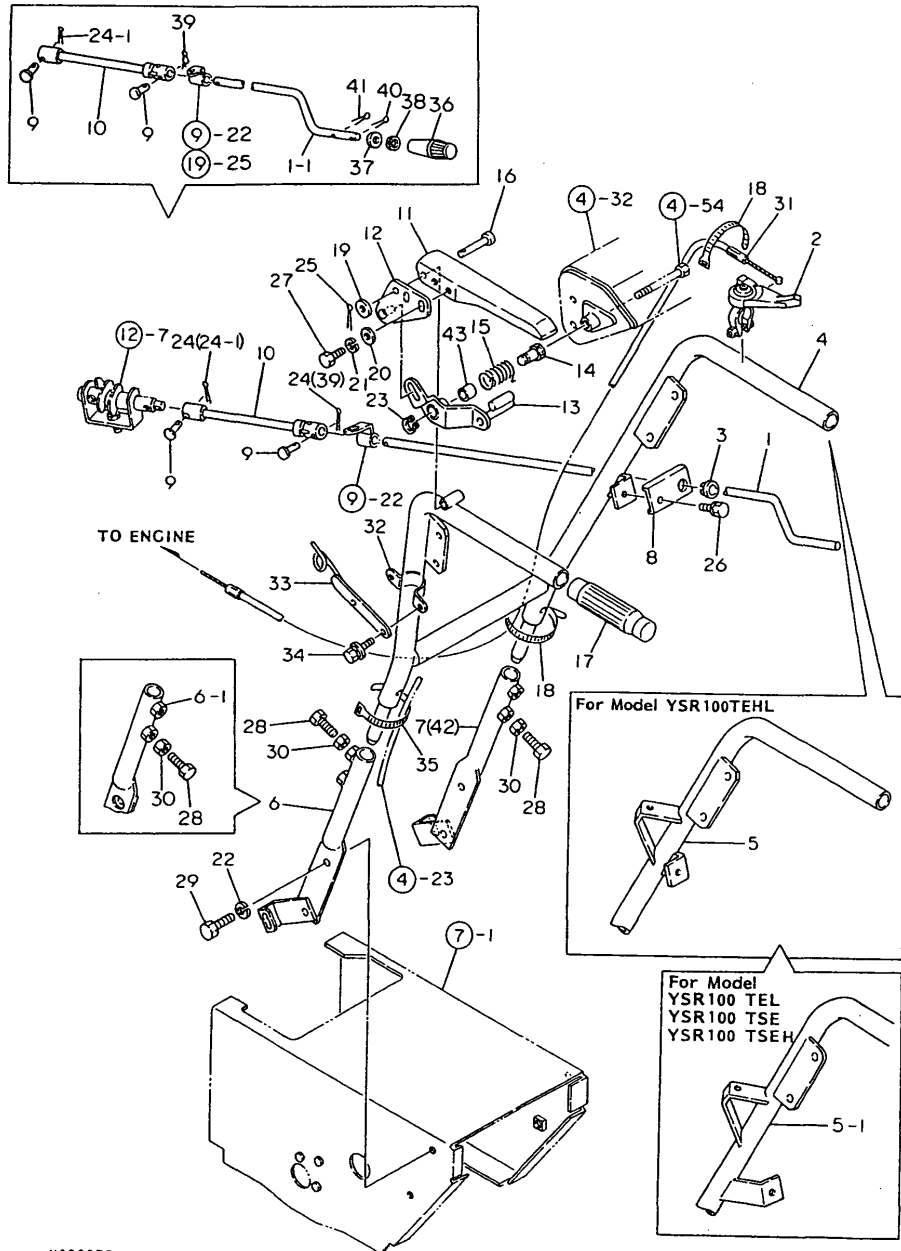


REF.	LEV.	PARTS NO.	DESCRIPTION	QTY						I	R
				(A)	(B)	(C)	(D)	(E)	(F)		
36	1	1E6460-83400	BAND 100	2	2	2	2				
37	1	22117-060000	WASHER 6	2	2	2	2				
38	1	22117-060000	WASHER 6	1	1	1	1				
39	1	22117-060000	WASHER 6	1	1	1	1				
40	1	22117-060000	WASHER 6	1	1	1	1				
41	1	22117-080000	WASHER 8	2	2	2	2				
42	1	22157-060000	WASHER 6	1	1	1	1				
43	1	22157-060000	WASHER 6	1	1	1	1				
44	1	22217-080000	SPRING WASHER 8	2	2	2	2				
45	1	22272-000070	CIRCLIP E- 7	1	1	1	1				
46	1	22417-200120	COTTER PIN 2.0X12	2	2	2	2				
46-1	1	22417-200120	COTTER PIN 2.0X12	1	1	1	1				K
(A=F810001) (B=F810001)											
47	1	22417-200120	COTTER PIN 2.0X12	2	2	2	2				
47-1	1	22417-200120	COTTER PIN 2.0X12	1	1	1	1				K
(A=F810001) (B=F810001)											
48	1	22417-200120	COTTER PIN 2.0X12	1	1	1	1				
48-1	1	22372-060000	SNAP PIN 6	1	1	1	1				R
(A=F810001) (B=F810001)											
49	1	22417-200120	COTTER PIN 2.0X12	1	1	1	1				
50	1	22417-200120	COTTER PIN 2.0X12	1	1	1	1				
51	1	26016-060164	BOLT 6X16 W/L.W.	2	2	2	2				
52	1	26016-080204	BOLT M 8X 20	4	4	4	4				
53	1	26051-080002	NUT M 8	2	2	2	2				
54	1	26117-080754	BOLT M 8X 75 PLATED	2	2	2	2				
55	1	26347-080002	U-NUT M 8	1	1	1	1				
56	1	26657-080002	CAP NUT M 8	1	1	1	1				
57	1	26717-080002	NUT 8	4	4	4	4				
58	1	26717-080002	NUT 8	1	1	1	1				
59	1	26717-080002	NUT 8	2	2	2	2				
60	1	26717-080002	NUT 8	2	2	2	2				
61	1	26717-080002	NUT 8	3	3	3	3				
62	1	22372-060000	SNAP PIN 6	1	1	1	1				W
(A=F810001) (B=F810001)											
63	1	22372-080000	SNAP PIN (JASO 8)	1	1	1	1				W
(A=F810001) (B=F810001)											
64	1	24550-012150	BUSH 12X15	1	1	1	1				W
(A=F81XXXX) (B=F81XXXX) (C=F81XXXX) (D=F81XXXX)											
65	1	24550-012150	BUSH 12X15	1	1	1	1				W
(A=F81XXXX) (B=F81XXXX) (C=F81XXXX) (D=F81XXXX)											

N053874

Fig.5. CONTROL 2

5. CONTROL 2



(A)=YSR100TE
(B)=YSR100TEHL
(C)=YSR100TEL

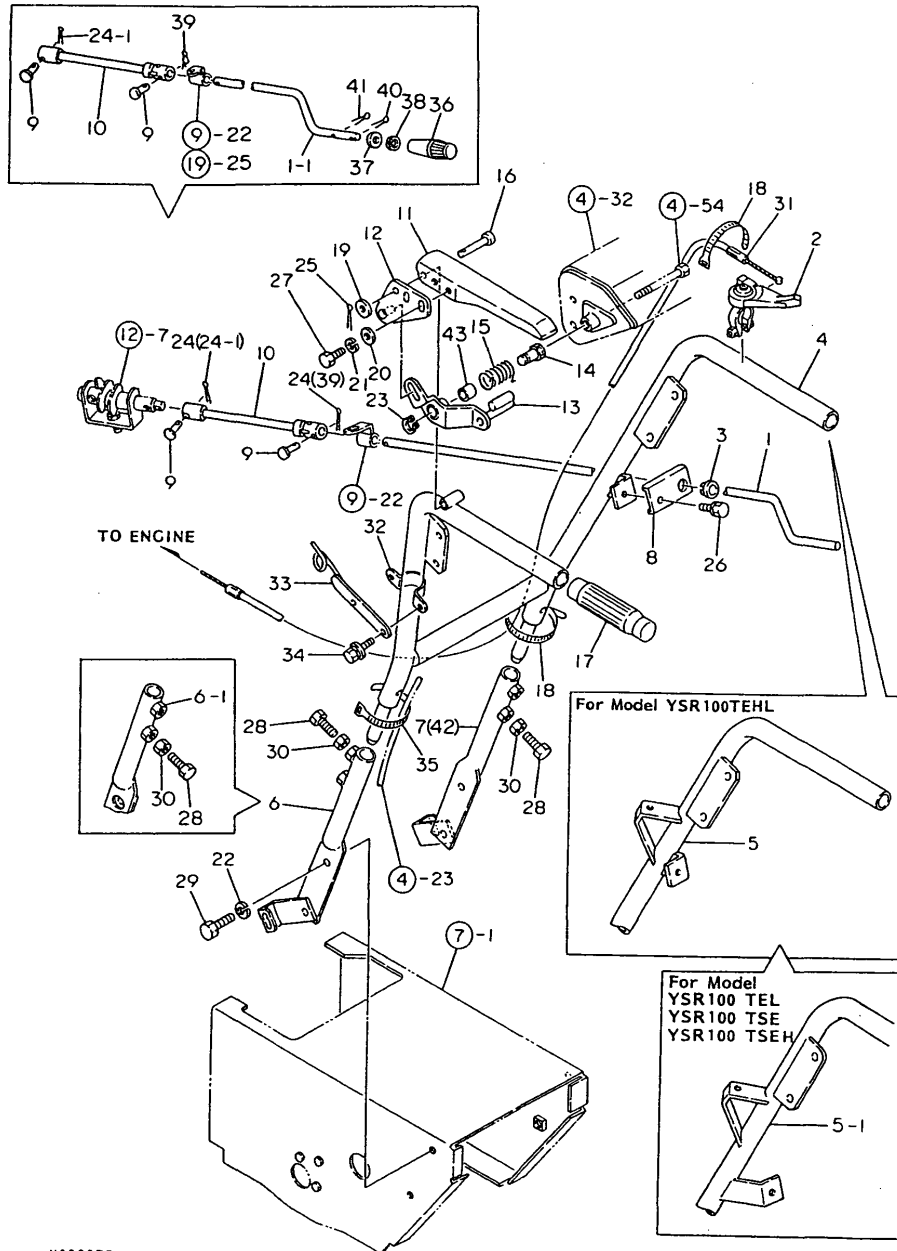
(D)=YSR100TSE(H)
(E)=
(F)=

REF.	LEV.	PARTS NO.	DESCRIPTION	QTY						I	R
				(A)	(B)	(C)	(D)	(E)	(F)		
1	1	1N1960-32000	HANDLE,CHUTE	1	1						
1-1	1	1N1960-32001	HANDLE,CHUTE	1	1	1	1				N
		(A=F810001) (B=F810001)									
2	1	1N1570-32620	LEVER,ACCELERATOR	1	1	1	1				
3	1	1N1711-32790	BUSH	1	1	1	1				
4	1	1N1711-35000	HANDLE E COMPL.	1							
4-1	1	1N1711-35001	HANDLE E COMPL.	1							S
		(A=F810001)									
5	1	1N1711-35130	HANDLE ES COMPL.		1						
5-1	1	1N1711-35131	HANDLE ES COMPL.		1	1	1				S
		(B=F810001)									
6	1	1N1721-35000	SUPPORT L CMP,HANDLE	1	1						
6-1	1	1N1721-35001	SUPPORT L CMP,HANDLE	1	1	1	1				N
		(A=F810001) (B=F810001)									
7	1	1N1721-35040	SUPPORT R CMP,HANDLE	1	1	1					
8	1	1N1710-73140	BEARING,CHUTE HANDLE	1	1	1	1				
9	1	1N1570-73260	RIVET 4X20,ROUND	2	2	2	2				
10	1	1N1710-73311	ROD,CONNECTING	1	1	1	1				
11	1	1N1710-82000	CLUTCH GRIP COMP	1	1	1	1				
12	1	1N1710-82020	LEVER A	1	1	1	1				
13	1	1N1710-82041	LEVER B	1	1						
13-1	1	1N1710-82042	LEVER B	1	1	1	1				N
		(A=F810001) (B=F810001)									
13-2	1	1N1710-82043	LEVER (B)	1	1	1	1				S
		(A=F81XXXX) (B=F81XXXX) (C=F81XXXX) (D=F81XXXX)									
14	1	1N1710-82110	SHAFT,FULCRUM	1	1	1	1				
14-1	1	1N1710-82111	SHAFT,FULCRUM	1	1	1	1				S
		(A=F81XXXX) (B=F81XXXX) (C=F81XXXX) (D=F81XXXX)									
15	1	1N1710-82120	RETURN SPRING	1	1	1	1				
16	1	1N1710-82131	RIVET 8X41	1	1	1	1				
17	1	1N1710-82140	GRIP BK-8,HANDLE	2	2	2	2				
18	1	1E6102-84970	BAND 140,WIRE LOCK	2	2	2	2				
19	1	22117-080000	WASHER 8	1	1	1	1				
20	1	22137-060000	WASHER 6, POLISHED	2	2	2	2				
21	1	22217-060000	SPRING WASHER 6	2	2	2	2				
22	1	22217-100000	SPRING WASHER 10	4	4	4	4				
23	1	22242-000150	CIRCLIP 15	1	1	1	1				
24	1	22417-200120	COTTER PIN 2.0X12	2	2						
24-1	1	22417-200120	COTTER PIN 2.0X12	1	1	1	1				K
		(A=F810001) (B=F810001)									
25	1	22417-200160	COTTER PIN 2.0X16	1	1	1	1				
26	1	26016-080164	BOLT M 8X 16	1	1	1	1				
27	1	26116-060162	BOLT 6X16	2	2	2	2				
28	1	26116-100252	BOLT M10X 25 PLATED	4	4	4	4				
29	1	26116-100302	BOLT 10X30	4	4	4	4				
30	1	26717-100002	NUT M10	4	4	4	4				
31	1	1N1960-32100	WIRE E,ACCELERATOR	1	1	1	1				
32	1	1N1710-33230	FITTINGS,STAY	1	1	1	1				
33	1	1N1711-35350	HOOK 60E,RECOIL	1	1	1	1				
34	1	26018-060204	BOLT M 6X 20	2	2	2	2				
35	1	1E6102-84970	BAND 140,WIRE LOCK	1	1	1	1				

N:Old $\frac{Yes}{No}$ New, Q:Old $\frac{No}{Yes}$ New, R:Old $\frac{Yes}{Yes}$ New, S:Old $\frac{No}{No}$ New, W:Add, Z:Discontinued, F:Interchangeable by set, K:Q'ty Change
 ++ CONTINUE ++
 (C)Copy Rights YANMAR CO.,LTD.

Fig.5. CONTROL 2

5. CONTROL 2



OCNP2-G00200 5. CONTROL 2

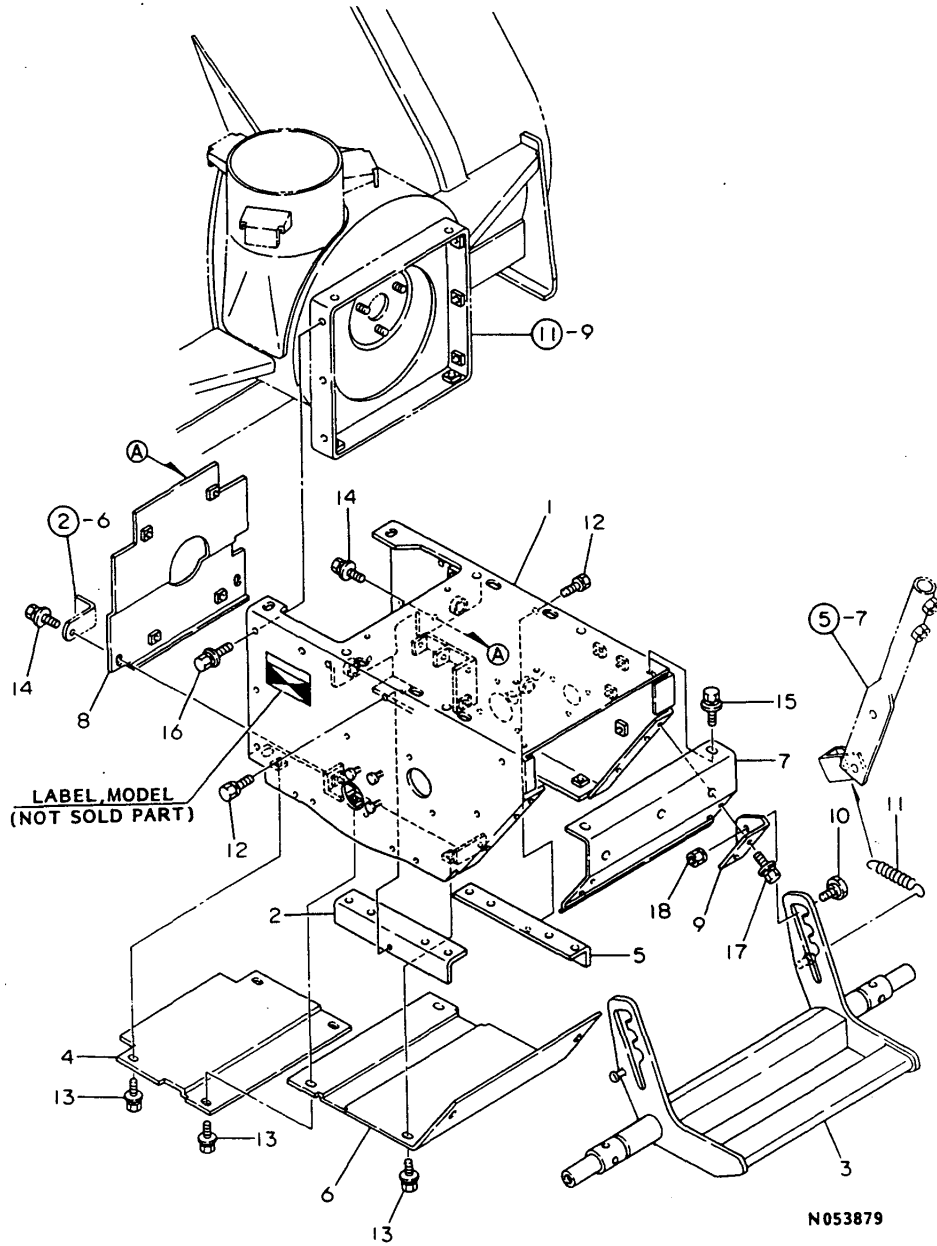
(A)=YSR100TE
(B)=YSR100TEHL
(C)=YSR100TEL

(D)=YSR100TSE(H)
(E)=
(F)=

REF.	LEV.	PARTS NO.	DESCRIPTION	QTY						I	R
				(A)	(B)	(C)	(D)	(E)	(F)		
36	1	1N1711-35520 (A=F810001) (B=F810001)	GRIP,SHOOT	1	1	1	1				W
37	1	22137-100000 (A=F810001) (B=F810001)	WASHER 10,POLISHED	1	1	1	1				W
38	1	22292-000110 (A=F81XXXX) (B=F810001)	CIRCLIP 11	1	1	1	1				W
39	1	22372-040000 (A=F810001) (B=F81XXXX)	SNAP PIN 4	1	1	1	1				W
40	1	22417-200160 (A=F810001) (B=F810001)	COTTER PIN 2.0X16	1	1	1	1				W
41	1	22417-250160 (A=F810001) (B=F810001)	COTTER PIN 2.5X16	1	1	1	1				W
42	1	1N1721-55070	SUPPORT R CMP,HANDLE							1	
43	1	24550-015120 (A=FXXXXXX) (B=F81XXXX) (C=F81XXXX) (D=F81XXXX)	BUSH 15X12	1	1	1	1				W

Fig.7. CHASSIS 2

7. CHASSIS 2



N053879

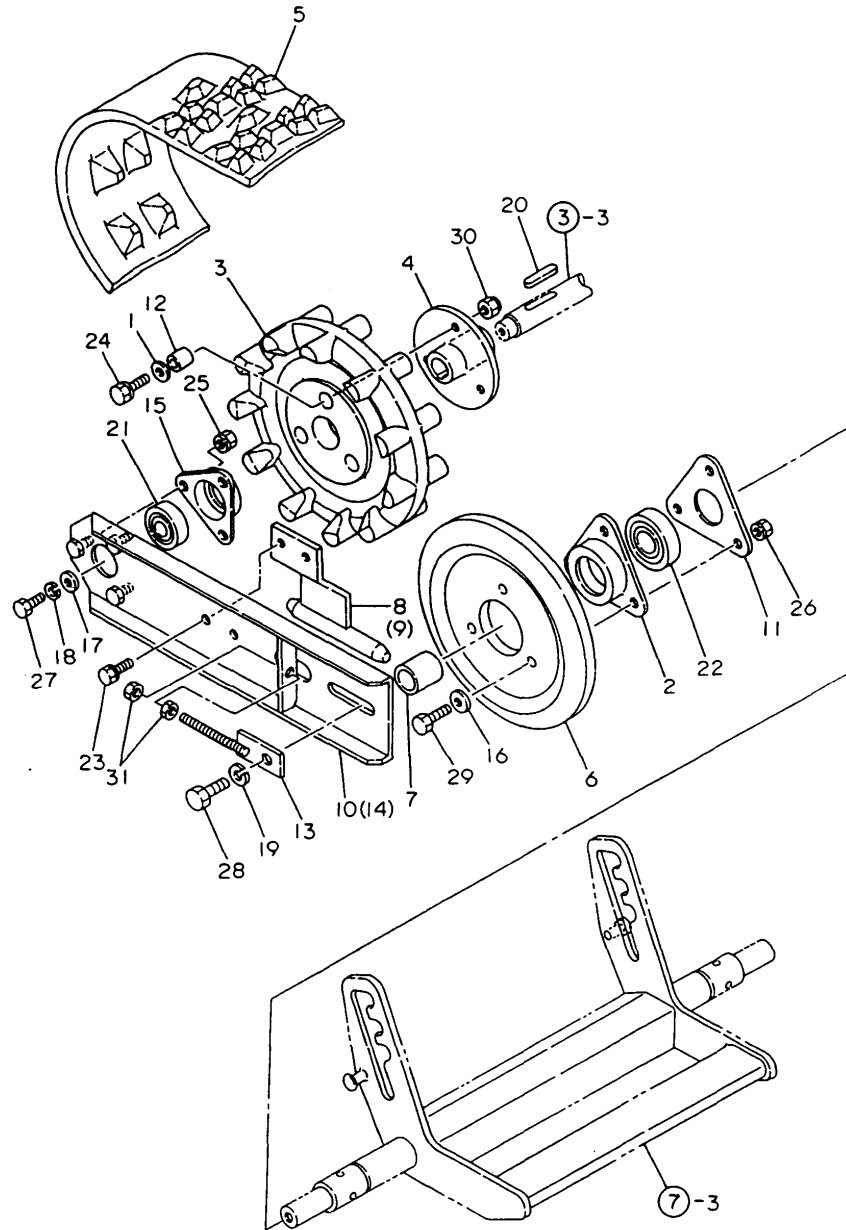
(A)=YSR100TE
(B)=YSR100TEHL
(C)=YSR100TEL

(D)=YSR100TSE(H)
(E)=
(F)=

REF.	LEV.	PARTS NO.	DESCRIPTION	QTY						I	R
				(A)	(B)	(C)	(D)	(E)	(F)		
1	1	1N1960-36050	CHASSIS COMPL.	1	1						
1-1	1	1N1960-36051	CHASSIS COMPL.	1	1	1	1				S
		(A=F810001) (B=F810001)									
2	1	1N1720-36100	BASE L,ENGINE	1	1	1	1				
3	1	1N1960-36100	PEDAL COMP.,FOOT	1	1	1	1				
4	1	1N1721-36110	PLATE A,CHASSIS BTM	1	1						
4-1	1	1N1721-36111	PLATE A,CHASSIS BTM	1	1	1	1				S
		(A=F810001) (B=F810001)									
5	1	1N1720-36120	BOLT 8X16 W/L.W.	1	1	1	1				
6	1	1N1721-36120	PLATE B,CHASSIS BTM	1	1						
6-1	1	1N1721-36121	PLATE B,CHASSIS BTM	1	1	1	1				R
		(A=F810001) (B=F810001)									
7	1	1N1720-36200	PLATE R,CHASSIS	1	1	1	1				
8	1	1N1720-36220	PLATE,SHUT-OFF	1	1						
8-1	1	1N1720-36221	PLATE,SHUT-OFF	1	1	1	1				N
		(A=F810001) (B=F810001)									
9	1	1N1720-36250	FIXTURE	2	2	2	2				
10	1	1N1570-36351	BOLT,REAMER	2	2	2	2				
11	1	1N1710-36370	SPRING,FOOT	2	2	2	2				
12	1	26016-080164	BOLT M 8X 16	2	2	2	2				
13	1	26018-060124	BOLT M 6X 12	8	8	8	8				
14	1	26018-060164	BOLT M 6X 16	4	4	4	4				
15	1	26018-080164	BOLT M 8X 16	2	2	2	2				
16	1	26018-080164	BOLT M 8X 16	10	10	10	10				
17	1	26018-080204	BOLT M 8X 20	4	4	4	4				
18	1	26051-080002	NUT M 8	2	2						
18-1	1	26347-080002	U-NUT M 8	2	2	2	2				N
		(A=F810001) (B=F810001)									

Fig.8. CRAWLER

8. CRAWLER



N053880

OCNP2-G00200 8. CRAWLER

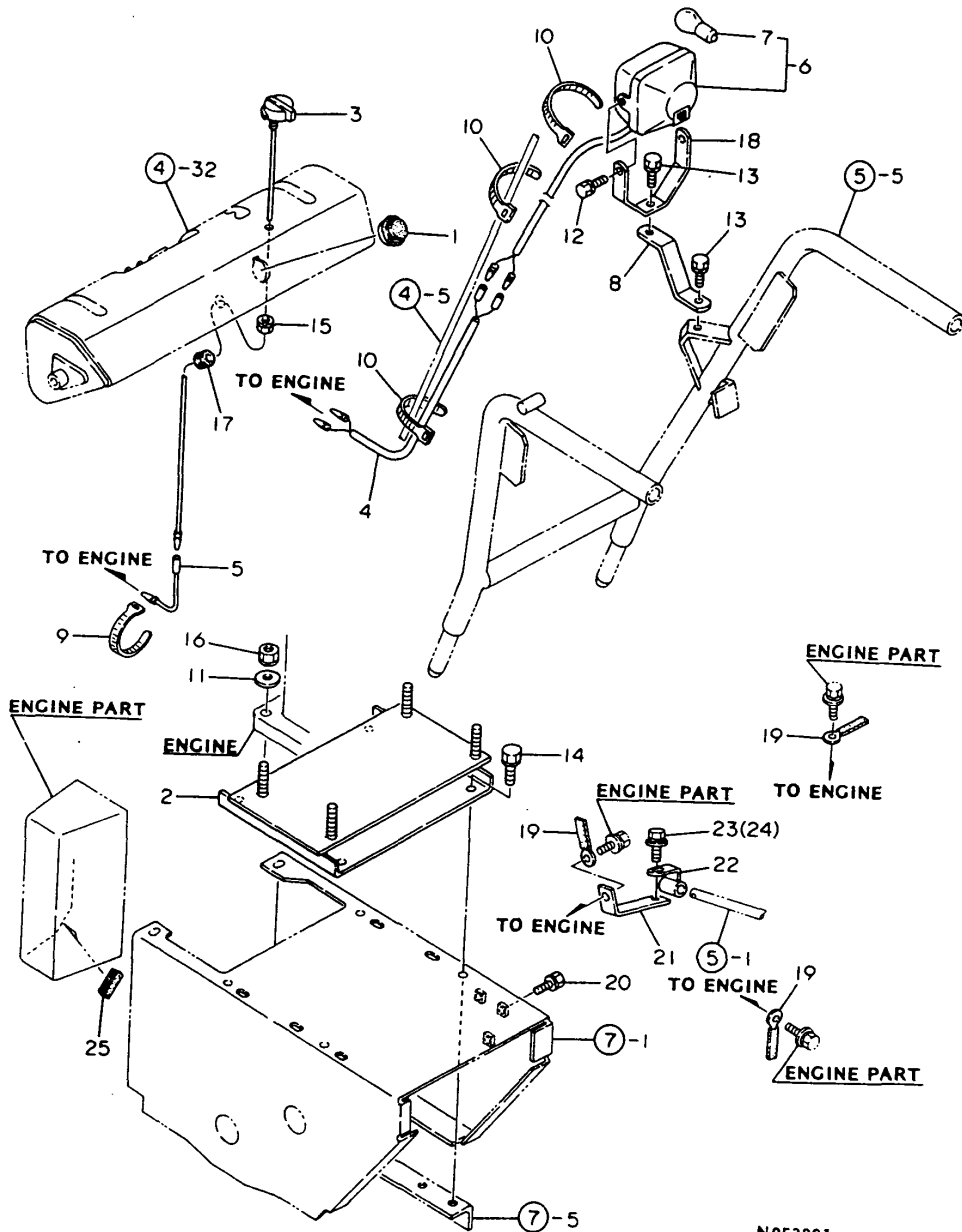
(A)=YSR100TE
(B)=YSR100TEHL
(C)=YSR100TEL

(D)=YSR100TSE(H)
(E)=
(F)=

REF.	LEV.	PARTS NO.	DESCRIPTION	QTY						I	R
				(A)	(B)	(C)	(D)	(E)	(F)		
1	1	1J3999-02020	WASHER 8	6	6	6	6				
I 2	1	1J3000-20020	BEARING	2	2	2	2				
3	1	1N1570-38000	SPROCKET 11	2	2	2	2				
I 4	1	1N1710-38000	BOSS, SPROCKET	2	2	2	2				
5	1	1N1960-38000	CRAWLER	2	2	2	2				
6	1	1N1570-38010	RING, TOP	2	2	2	2				
I 7	1	1N1570-38020	COLLAR 21X27X26	2	2	2	2				
8	1	1N1710-38020	GUIDE L	1	1	1	1				
9	1	1N1710-38040	GUIDE R	1	1	1	1				
10	1	1N1570-38050	PLATE L, CRAWLER SIDE	1	1	1	1				
I 11	1	1N1570-38090	PLATE, BEARING KEEP	2	2	2	2				
I 12	1	1N1570-38130	COLLAR 8X14X9	6	6	6	6				
13	1	1N1570-38150	BOLT W/PIPE	2	2	2	2				
14	1	1N1570-38180	PLATE R, CRAWLER SIDE	1	1	1	1				
15	1	1N1570-38210	BEARING 6203B	2	2	2	2				
16	1	22137-080000	WASHER 8, POLISHED	6	6	6	6				
17	1	22157-080000	WASHER 8	2	2	2	2				
18	1	22217-080000	SPRING WASHER 8	2	2	2	2				
19	1	22217-100000	SPRING WASHER 10	2	2	2	2				
20	1	22512-050300	KEY 5X 30	2	2	2	2				
21	1	24104-062034	BALL BEARING	2	2	2	2				
22	1	24104-063044	BALL BEARING	2	2	2	2				
23	1	26016-080204	BOLT M 8X 20	4	4	4	4				
24	1	26016-080302	BOLT M 8X 30	6	6	6	6				
25	1	26051-080002	NUT M 8	6	6	6	6				
26	1	26051-080002	NUT M 8	6	6	6	6				
27	1	26116-080252	BOLT M 8X 25 PLATED	2	2	2	2				
28	1	26116-100252	BOLT M10X 25 PLATED	2	2	2	2				
29	1	26117-080252	BOLT M 8X 25 PLATED	6	6	6	6				
I 30	1	26347-080002	U-NUT M 8	6	6	6	6				
31	1	26717-080002	NUT 8	4	4	4	4				

Fig.9. ENGINE & ELECTRICAL PARTS

9. ENGINE & ELECTRICAL PARTS



N053881

OCNP2-G00200 9. ENGINE & ELECTRICAL PARTS

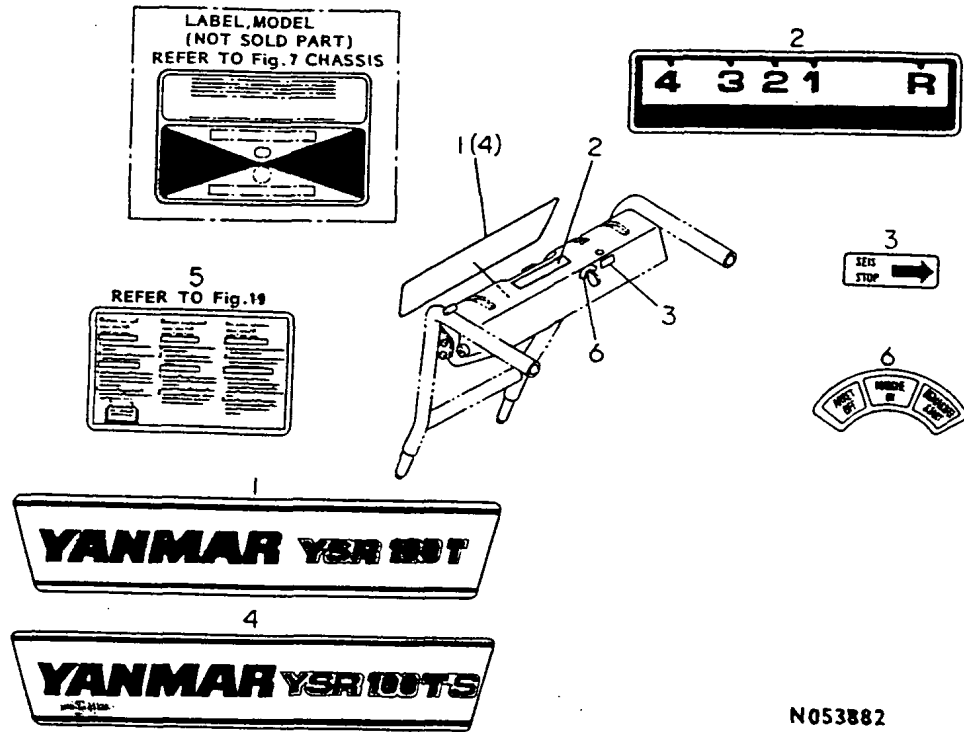
(A)=YSR100TE
(B)=YSR100TEHL
(C)=YSR100TEL

(D)=YSR100TSE(H)
(E)=
(F)=

REF.	LEV.	PARTS NO.	DESCRIPTION	QTY						I	R
				(A)	(B)	(C)	(D)	(E)	(F)		
1	1	1N1710-32180	GROMMET W/FILM	1	1	1					
2	1	1N1960-36150	BASE,ENGINE	1	1	1					
2-1	1	1N1960-36151	BASE, ENGINE	1	1	1					R
		(A)=F81XXXX (B)=F81XXXX (C)=F81XXXX									
3	1	1N1711-51770	SWITCH,STOR	1	1	1					
4	1	1N1711-51400	HARNES A,HEADLIGHT		1	1					
5	1	1N1711-51790	HARNES TE	1	1	1					
6	1	1N1711-51850	HEADLIGHT COMPL.		1	1					
7	2	1N1711-51860	LAMP 12V-15W G23		1	1					
8	1	1N1721-52470	STAY TD,HEADLIGHT		1	1					
9	1	1E6460-83400	BAND 100	1	1	1					
10	1	1E6102-84970	BAND 140,WIRE LOCK		3	3					
11	1	22137-100000	WASHER 10,POLISHED	4	4	4					
12	1	26016-060164	BOLT 6X16 W/L.W.		2	2					
13	1	26016-080164	BOLT M 8X 16		2	2					
14	1	26016-100204	BOLT M10X 20	4	4	4					
15	1	26051-080002	NUT M 8	1	1	1					
16	1	26051-100002	NUT M10	4	4	4					
17	1	29311-092000	GROMMET 8.5X2.0	1	1	1					
18	1	1N1711-51390	STAY,HEADLIGHT		1	1					
19	1	1N1710-32600	CLAMP 8X70	3	3	3					
20	1	26016-080164	BOLT M 8X 16	3	3	3					
21	1	1N1960-32050	STAY,HANDLE GUIDE	1	1	1					
22	1	1N1710-73340	GUIDE,HANDLE	1	1	1					
23	1	26018-060164	BOLT M 6X 16	1		1					
24	1	26018-060164	BOLT M 6X 16		1						
25	1	1N1721-51230	MOLDINGS 30,HOSE	1	1	1					

Fig.10. MARKS

10. MARKS



N053882

OCNP2-G00200 10. MARKS

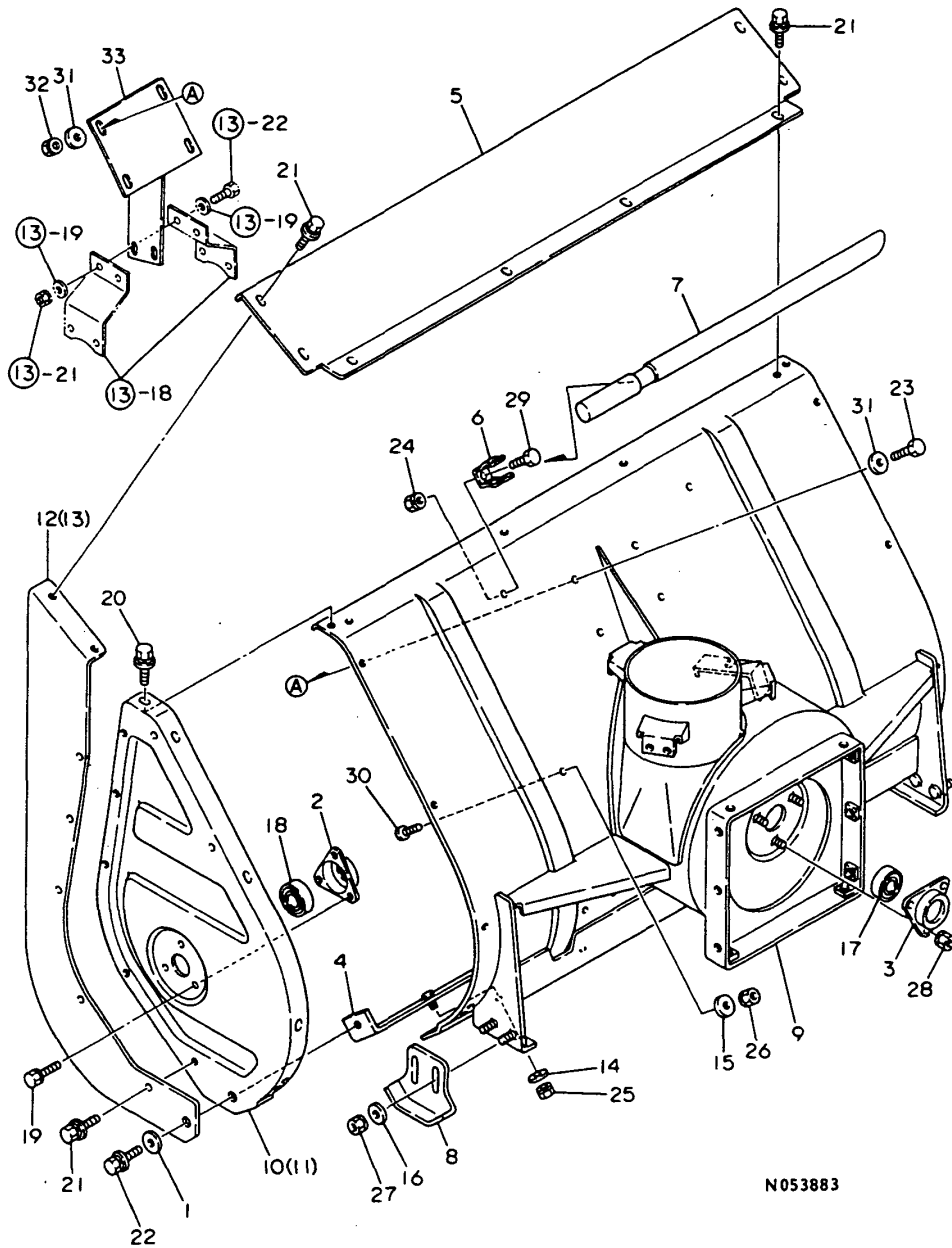
(A)=YSR100TE
(B)=YSR100TEHL
(C)=YSR100TEL

(D)=YSR100TSE(H)
(E)=
(F)=

REF.	LEV.	PARTS NO.	DESCRIPTION	QTY						I	R	
				(A)	(B)	(C)	(D)	(E)	(F)			
1	1	1N1960-67010	MARK,MODEL	1	1	1						
2	1	1N1710-67150	MARK B,CHANGE	1	1	1	1					
3	1	1N1711-68330	MARK,ENGINE STOP	1	1	1						W
4	1	(A=F810001) 1N1960-67020	MARK,MODEL									1
5	1	1N1960-67100	LABEL,BATTERY CUT'N									1
6	1	1N1711-68170	MARK,SWITCH									1

Fig.11. SNOW REMOVING FRAME

11. SNOW REMOVING FRAME



N053883

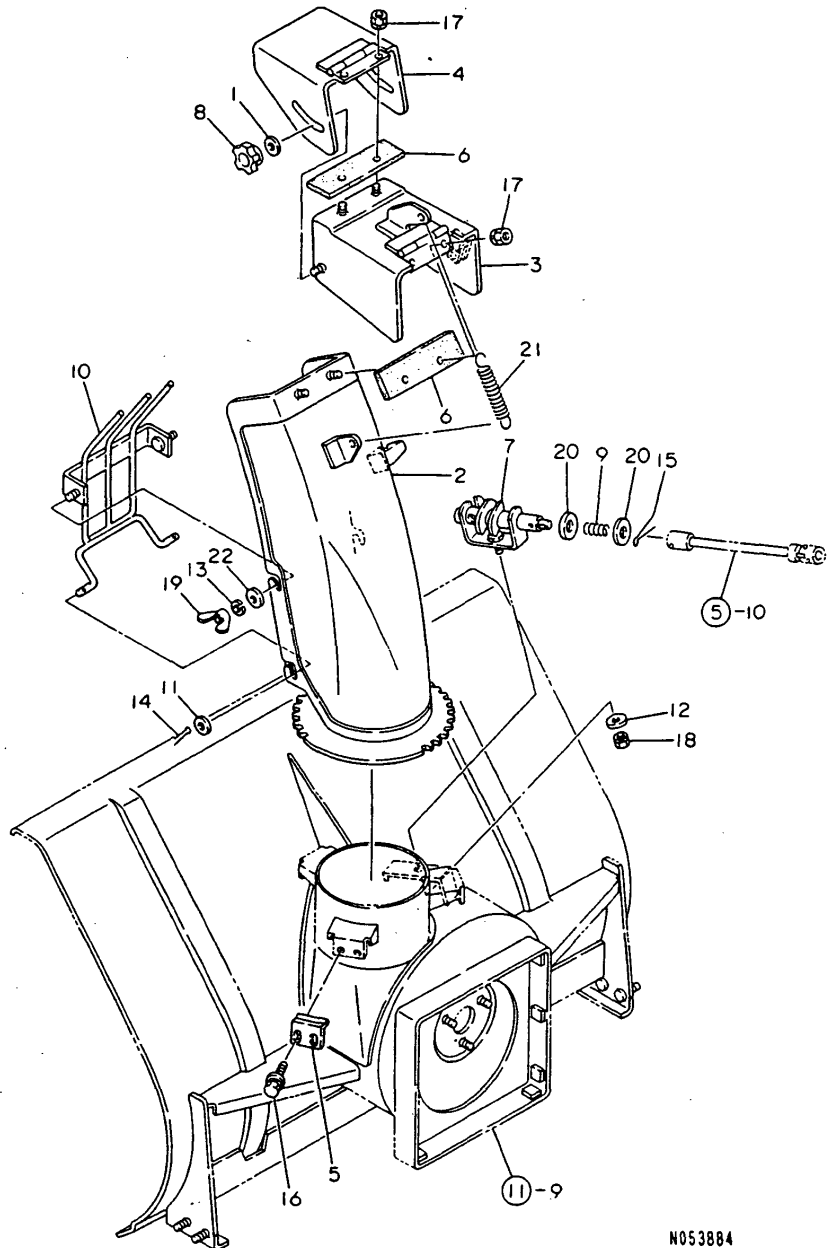
(A)=YSR100TE
(B)=YSR100TEHL
(C)=YSR100TEL

(D)=YSR100TSE(H)
(E)=
(F)=

REF.	LEV.	PARTS NO.	DESCRIPTION	QTY						I	R
				(A)	(B)	(C)	(D)	(E)	(F)		
1	1	1J3999-02010	WASHER 6	2	2	2	2				
2	1	1N1570-38200	BEARING 6203C	2	2	2	2				
3	1	1N1570-38210	BEARING 6203B	1	1	1	1				
4	1	1N1960-71000	PLATE,BOTTOM	1	1	1	1				
5	1	1N1960-71030	COVER,UPPER AUX.	1	1	1	1				
6	1	1N1710-71060	METAL,LOCK	2	2	2	2				
7	1	1N1710-71071	ROD,SNOW SHOVELING	1	1	1	1				
8	1	1N1711-71100	GUIDE	2	2	2	2				
9	1	1N1960-71100	CASE E COMP.,AUGER	1	1						
9-1	1	1N1960-71101	CASE E COMP.,AUGER	1	1	1	1				N
		(A=F810001) (B=F810001)									
10	1	1N1960-71550	PLATE L CMP,AGR.SIDE	1	1						
10-1	1	1N1960-71551	PLATE L CMP,AUGER SD	1	1	1	1				N
		(A=F810001) (B=F810001)									
11	1	1N1960-71560	PLATE R CMP,AGR.SIDE	1	1						
11-1	1	1N1960-71561	PLATE R CMP,AUGER SD	1	1	1	1				N
		(A=F810001) (B=F810001)									
12	1	1N1720-82001	COVER L COMP.,AUX.	1	1						
12-1	1	1N1720-82002	COVER L COMP.,AUX.	1	1	1	1				N
		(A=F810001) (B=F810001)									
13	1	1N1720-82021	COVER R COMP.,AUX.	1	1						
13-1	1	1N1720-82022	COVER R COMP.,AUX.	1	1	1	1				N
		(A=F810001) (B=F810001)									
14	1	22137-060000	WASHER 6, POLISHED	5	5	5	5				
15	1	1J3999-02000	WASHER 6,PLAIN	3	3						Z
		(A=F810001) (B=F810001)									
16	1	22137-080000	WASHER 8, POLISHED	4	4	4	4				
17	1	24104-062034	BALL BEARING	1	1	1	1				
18	1	24104-062034	BALL BEARING	2	2	2	2				
19	1	26016-080164	BOLT M 8X 16	6	6	6	6				
20	1	26018-060124	BOLT M 6X 12	12	12	12	12				
21	1	26018-060124	BOLT M 6X 12	18	18	18	18				
22	1	26018-060164	BOLT M 6X 16	2	2						
22-1	1	26016-060164	BOLT 6X16 W/L.W.	2	2	2	2				N
		(A=F710001) (B=F710001)									
23	1	26117-080202	BOLT M 8X 20 PLATED	4	4	4	4				
24	1	26051-060002	NUT M 6	2	2	2	2				
25	1	26051-060002	NUT M 6	5	5	5	5				
26	1	26051-060002	NUT M 6	3	3						Z
		(A=F810001) (B=F810001)									
27	1	26051-080002	NUT M 8	4	4	4	4				
28	1	26051-080002	NUT M 8	3	3	3	3				
29	1	26117-060122	BOLT M 6X 12 PLATED	2	2	2	2				
30	1	26161-060122	BOLT M 6 X12 PLATED	3	3						Z
		(A=F810001) (B=F810001)									
31	1	22137-080000	WASHER 8, POLISHED	8	8	8	8				
32	1	26051-080002	NUT M 8	4	4	4	4				
33	1	1N1960-71500	FIXTURE B,GEAR CASE	1	1	1	1				

Fig.12. CHUTE

12. CHUTE



N053884

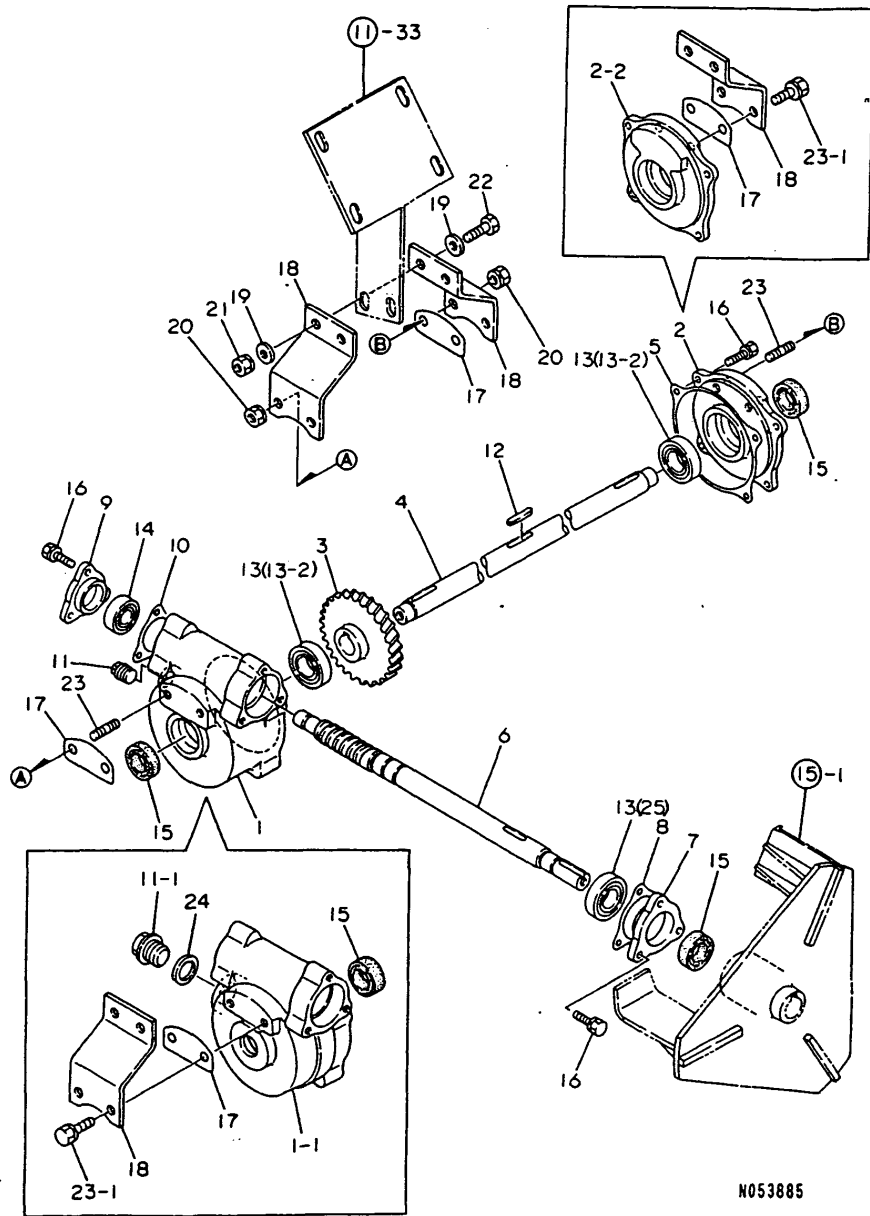
OCNP2-G00200 12. CHUTE

(A)=YSR100TE (D)=YSR100TSE(H)
 (B)=YSR100TEHL (E)=
 (C)=YSR100TEL (F)=

REF.	LEV.	PARTS NO.	DESCRIPTION	QTY						I	R
				(A)	(B)	(C)	(D)	(E)	(F)		
1	1	1J3999-02010	WASHER 6	2	2	2	2				
2	1	1N1960-73000	CAP COMPL,CHUTE	1	1						
2-1	1	1N1960-73001	CHUTE COMPL.	1	1	1	1				N
		(A=F810001) (B=F810001)									
3	1	1N1711-73080	CAP COMP.,CHUTE	1	1	1	1				
4	1	1N1711-73140	CAP COMP.,SUB-CHUTE	1	1	1	1				
5	1	1N1570-73160	RETAINER	3	3	3	3				
6	1	1N1711-73170	RUBBER,SNOW PROTECT.	2	2	2	2				
7	1	1N1570-73180	SPIRE,CHUTE	1	1	1	1				
8	1	1N1711-73200	NUT,THUMB	2	2	2	2				
9	1	1N1570-73270	SPRING B 19X28	1	1	1	1				
10	1	1N1960-73500	WASHER 6	1	1	1	1				
10-1	1	1N1960-73501	GUARD	1	1	1	1				R
		(A=F81XXXX) (B=F81XXXX) (C=F81XXXX) (D=F81XXXX)									
11	1	22117-060000	WASHER 6	2	2	2	2				
12	1	22137-080000	WASHER 8, POLISHED	1	1	1	1				
13	1	22217-060000	SPRING WASHER 6	2	2	2	2				
14	1	22417-200120	COTTER PIN 2.0X12	2	2	2	2				
15	1	22417-320220	COTTER PIN 3.2X22	1	1	1	1				
16	1	26018-060164	BOLT M 6X 16	6	6	6	6				
17	1	26051-060002	NUT M 6	4	4	4	4				
18	1	26051-080002	NUT M 8	1	1	1	1				
19	1	26635-060002	WING NUT M 6	2	2	2	2				
20	1	22117-140000	WASHER 14	2	2	2	2				
21	1	1N1570-73150	SPRING,CHUTE	1	1	1	1				
22	1	1J3999-02010	WASHER 6	2	2						
22-1	1	1N1711-73700	WASHER 6,CONICAL SPR	2	2	2	2				N

Fig.13. GEAR CASE

13. GEAR CASE



OCNP2-G00200 13. GEAR CASE

(A)=YSR100TE (D)=YSR100TSE(H)
 (B)=YSR100TEHL (E)=
 (C)=YSR100TEL (F)=

REF.	LEV.	PARTS NO.	DESCRIPTION	QTY						I	R
				(A)	(B)	(C)	(D)	(E)	(F)		
1	1	1N1960-74500	GEAR CASE B	1	1						
1-1	1	1N1960-74501	CASE B,GEAR	1	1	1	1				S
		(A=F810001) (B=F810001)									
1-2	1	1N1960-74502	GEAR CASE B	1	1	1	1				N
		(A=F81XXXX) (B=F81XXXX) (C=F81XXXX) (D=F81XXXX)									
2	1	1N1960-74510	COVER C,KEEP	1	1						
2-1	1	1N1960-74511	COVER D,KEEP	1	1	1	1				S
		(A=F810001) (B=F810001)									
2-2	1	1N1960-74512	COVER C,KEEP	1	1	1	1				N
		(A=F81XXXX) (B=F81XXXX) (C=F81XXXX) (D=F81XXXX)									
3	1	1N1710-74020	WHEEL,WORM	1	1						
3-1	1	1N1710-74021	WHEEL,WORM	1	1	1	1				S
		(A=F810001) (B=F810001)									
4	1	1N1960-74520	AUGER SHAFT	1	1	1	1				
5	1	1N1570-74050	PACKING C	1	1	1	1				
6	1	1N1721-74050	SHAFT E,WORM	1	1						
6-1	1	1N1721-74051	SHAFT E,WORM	1	1	1	1				S
		(A=F810001) (B=F810001)									
7	1	1N1570-74110	COVER A,KEEP	1	1	1	1				
8	1	1N1570-74120	PACKING A	1	1	1	1				
9	1	1N1570-74130	COVER B,KEEP	1	1	1	1				
10	1	1N1570-74140	PACKING B	1	1	1	1				
11	1	1N1570-74150	PLUG	1	1						
11-1	1	1N1711-74000	BOLT,DRAIN	1	1	1	1				S
		(A=F810001) (B=F810001)									
12	1	22512-050300	KEY 5X 30	1	1	1	1				
13	1	24107-060044	BALL BEARING	3	3						
13-1	1	24101-060044	BALL BEARING 6004	3	3						S
		(A=F710001) (B=F710001)									
13-2	1	24101-060044	BALL BEARING 6004	2	2	2	2				K
		(A=F810001) (B=F810001)									
14	1	24107-062024	BALL BEARING	1	1						
14-1	1	24101-062024	BALL BEARING	1	1						S
		(A=F710001) (B=F710001)									
14-2	1	24107-060044	BALL BEARING	1	1	1	1				N
		(A=F810001) (B=F810001)									
14-3	1	24107-062024	BALL BEARING	1	1	1	1				S
		(A=F810001) (B=F810001)									
15	1	24421-203508	SEAL, OIL	3	3	3	3				
16	1	26016-060204	BOLT M 6X 20	10	10	10	10				
17	1	1N1960-74530	PACKING D	2	2	2	2				Z
		(A=F81XXXX) (B=F81XXXX) (C=F81XXXX) (D=F81XXXX)									
18	1	1N1960-74540	FIXTURE A,GER CASE	2	2	2	2				
19	1	22137-080000	WASHER 8, POLISHED	4	4	4	4				
20	1	26051-080002	NUT M 8	4	4	4	4				Z
		(A=F81XXXX) (B=F81XXXX) (C=F81XXXX) (D=F81XXXX)									
21	1	26051-080002	NUT M 8	2	2	2	2				
22	1	26117-080252	BOLT M 8X 25 PLATED	2	2	2	2				
23	1	26216-080142	STUD M 8X 14 PLATED	4	4	4	4				
23-1	1	26016-080164	BOLT M 8X 16	4	4	4	4				S
		(A=F81XXXX) (B=F81XXXX) (C=F81XXXX) (D=F81XXXX)									

N:Old $\frac{Yes}{No}$ New, Q:Old $\frac{No}{Yes}$ New, R:Old $\frac{Yes}{Yes}$ New, S:Old $\frac{No}{No}$ New, W:Add, Z:Discontinued, F:Interchangeable by set, K:Q'ty Change
 ++ CONTINUE ++
 (C)Copy Rights YANMAR CO.,LTD.

Fig.13. GEAR CASE

13. GEAR CASE

OCNP2-G00200 13. GEAR CASE

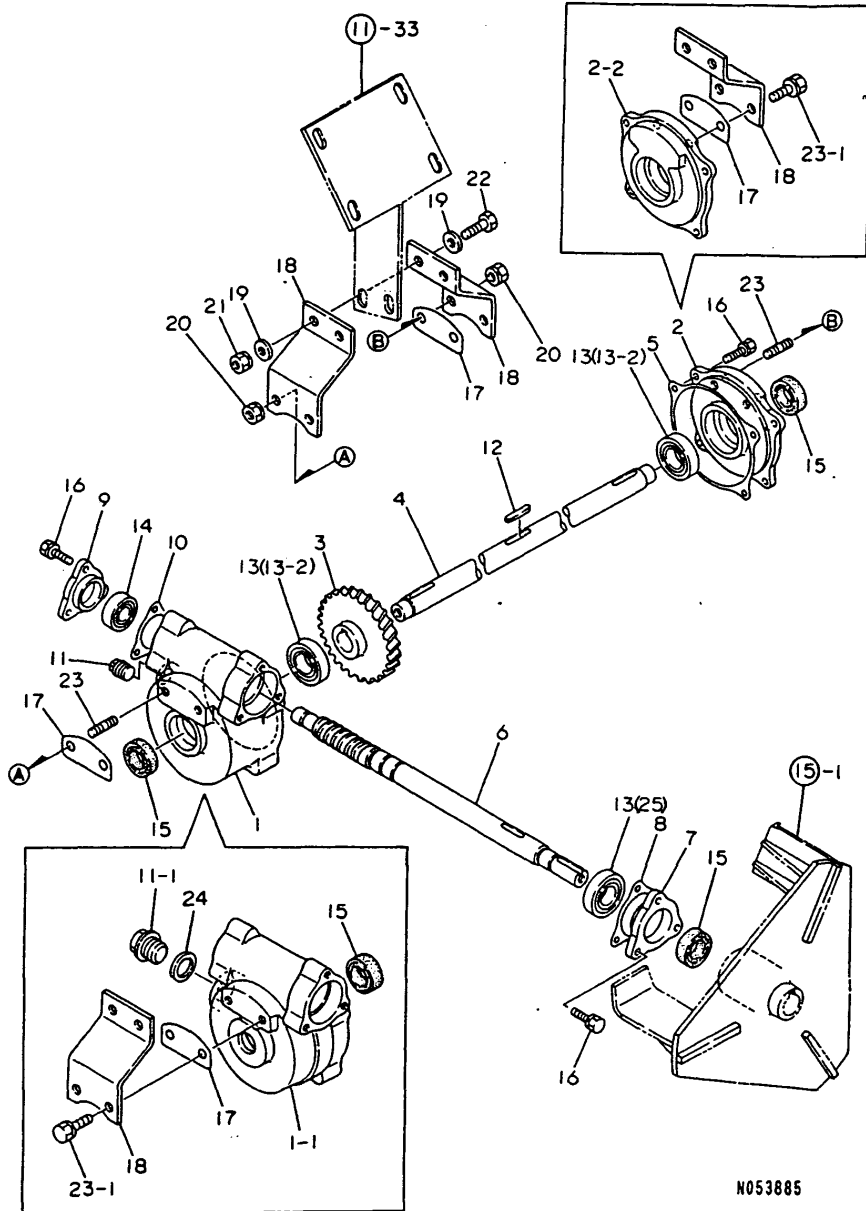
(A)=YSR100TE
(B)=YSR100TEHL
(C)=YSR100TEL

(D)=YSR100TSE(H)

(E)=

(F)=

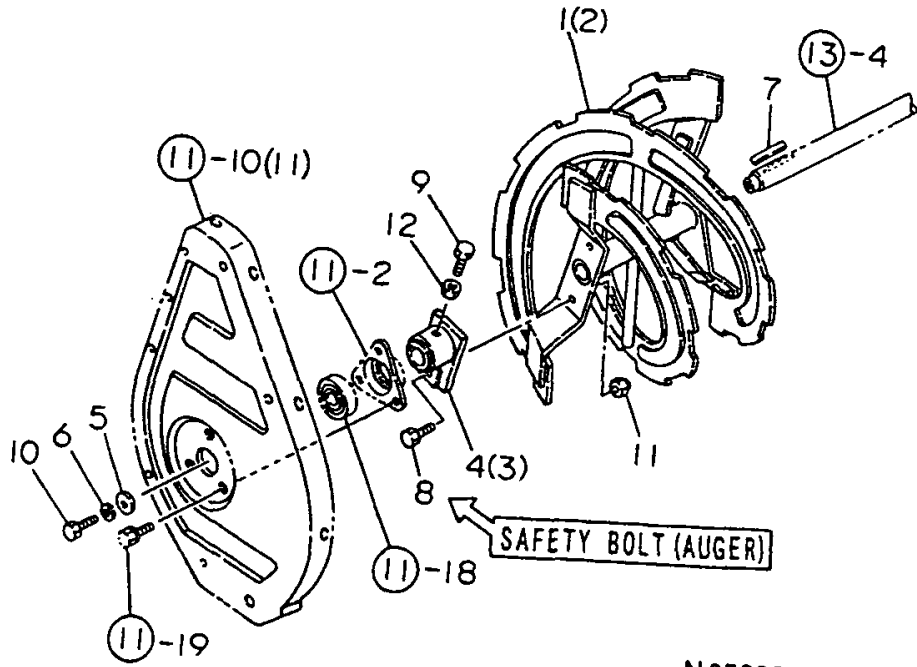
REF.	LEV.	PARTS NO.	DESCRIPTION	QTY						I	R
				(A)	(B)	(C)	(D)	(E)	(F)		
24	1	1N1711-74010 (A=F810001) (B=F810001)	PACKING 20X28X2,CU	1	1	1	1				W
25	1	24107-060044 (A=F810001) (B=F810001)	BALL BEARING	1	1	1	1				W



N053885

Fig.14. AUGER

14. AUGER



N053886

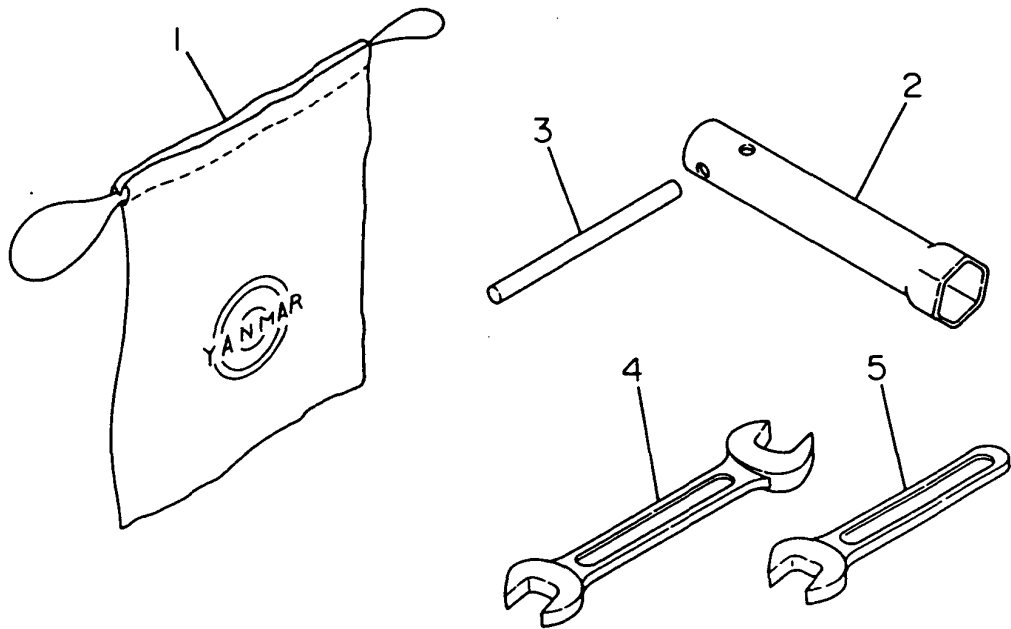
(A)=YSR100TE
(B)=YSR100TEHL
(C)=YSR100TEL

(D)=YSR100TSE(H)
(E)=
(F)=

REF.	LEV.	PARTS NO.	DESCRIPTION	QTY						I	R
				(A)	(B)	(C)	(D)	(E)	(F)		
1	1	1N1960-75000	AUGER L	1	1	1	1				
2	1	1N1960-75020	AUGER R	1	1	1	1				
3	1	1N1710-75041	FLANGE R	1	1	1	1				
4	1	1N1570-75151	FLANGE L	1	1	1	1				
5	1	22157-080000	WASHER 8	2	2	2	2				
6	1	22217-080000	SPRING WASHER 8	2	2	2	2				
7	1	22512-050300	KEY 5X 30	2	2	2	2				
8	1	26116-060202	BOLT M 6X 20	2	2	2	2				
9	1	26116-080162	BOLT 8X16	2	2	2	2				
10	1	26116-080252	BOLT M 8X 25 PLATED	2	2	2	2				
11	1	26347-060002	U-NUT M 6	2	2	2	2				
12	1	26717-080002	NUT 8	2	2	2	2				

Fig.16. TOOLS

16. TOOLS



N053888

OCNP2-G00200 16. TOOLS

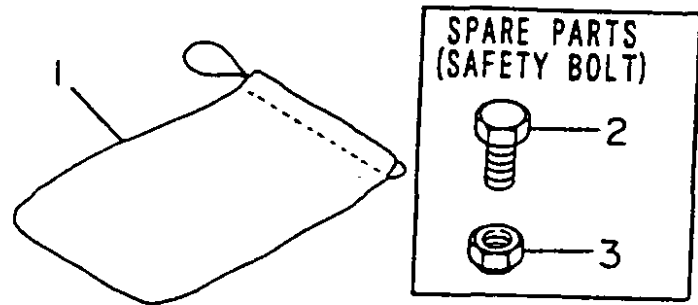
(A)=YSR100TE
(B)=YSR100TEHL
(C)=YSR100TEL

(D)=YSR100TSE(H)
(E)=
(F)=

REF.	LEV.	PARTS NO.	DESCRIPTION	Q'TY						I	R
				(A)	(B)	(C)	(D)	(E)	(F)		
1	1	160110-92610	BAG, TOOL	1	1	1	1				
2	1	160110-92700	BOX, SPANNER	1	1	1	1				
3	1	160110-92710	BAR	1	1	1	1				
4	1	28110-100120	WRENCH 10X12	1	1	1	1				
5	1	28110-100000	WRENCH	1	1	1	1				

Fig.17. ACCESSORIES

17. ACCESSORIES



OCNP2-G00200 17. ACCESSORIES

(A)=YSR100TE
(B)=YSR100TEHL
(C)=YSR100TEL

(D)=YSR100TSE(H)
(E)=
(F)=

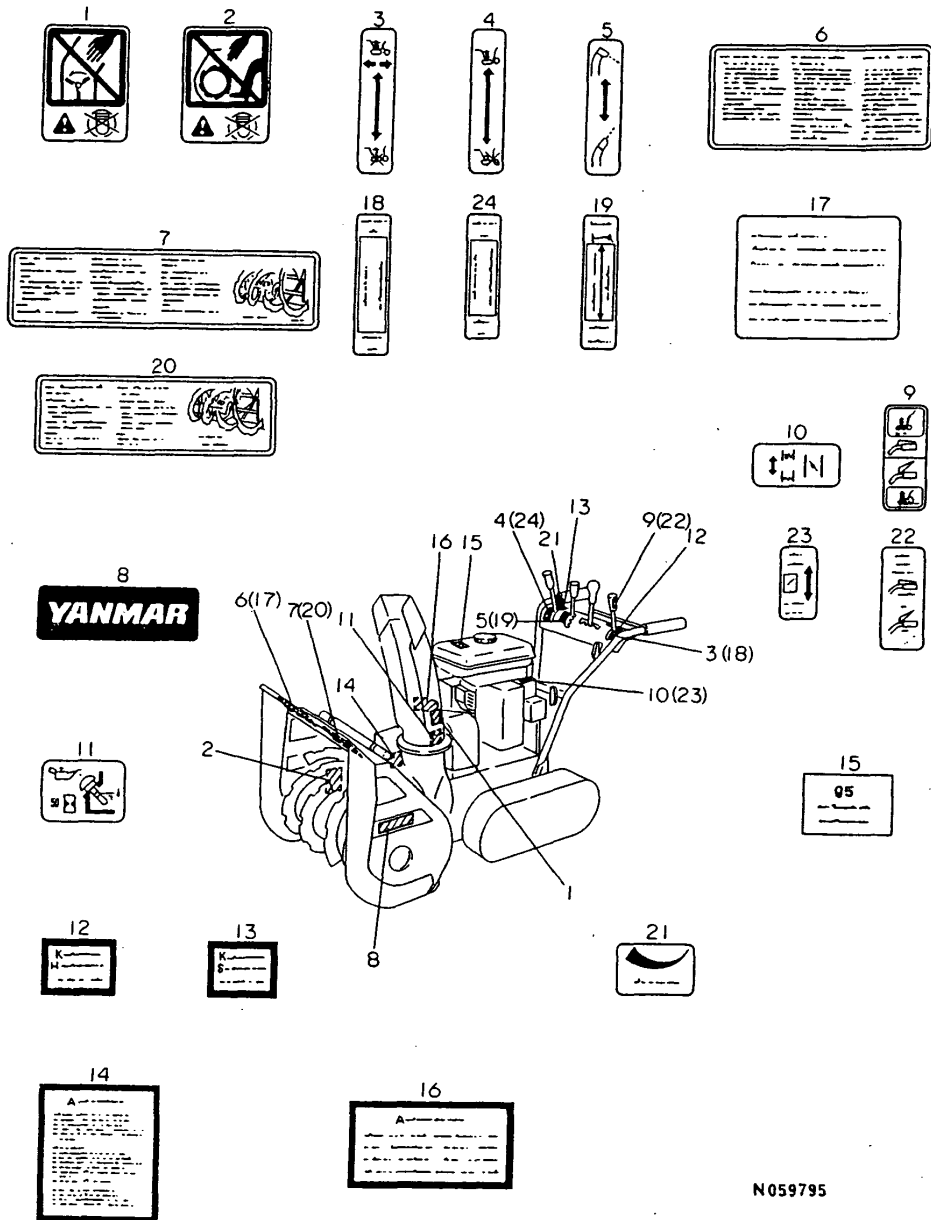
REF.	LEV.	PARTS NO.	DESCRIPTION	Q'TY						I	R	
				(A)	(B)	(C)	(D)	(E)	(F)			
1	1	1F1150-92000	BAG,TOOL	1	1	1						
2	1	26116-060202	BOLT M 6X 20	10	10	10						1
3	1	26347-060002	U-NUT M 6	10	10	10						1

Remarks

(1) SAFETY BOLT IS A SPARE PARTS.
REF.NO.2=REF.NO.8 IN GROUP NO.14.
REF.NO.3=REF.NO.11 IN GROUP NO.14

Fig.18. MARKS 13(ADDED GROUP)

18. MARKS 13(ADDED GROUP)



N059795

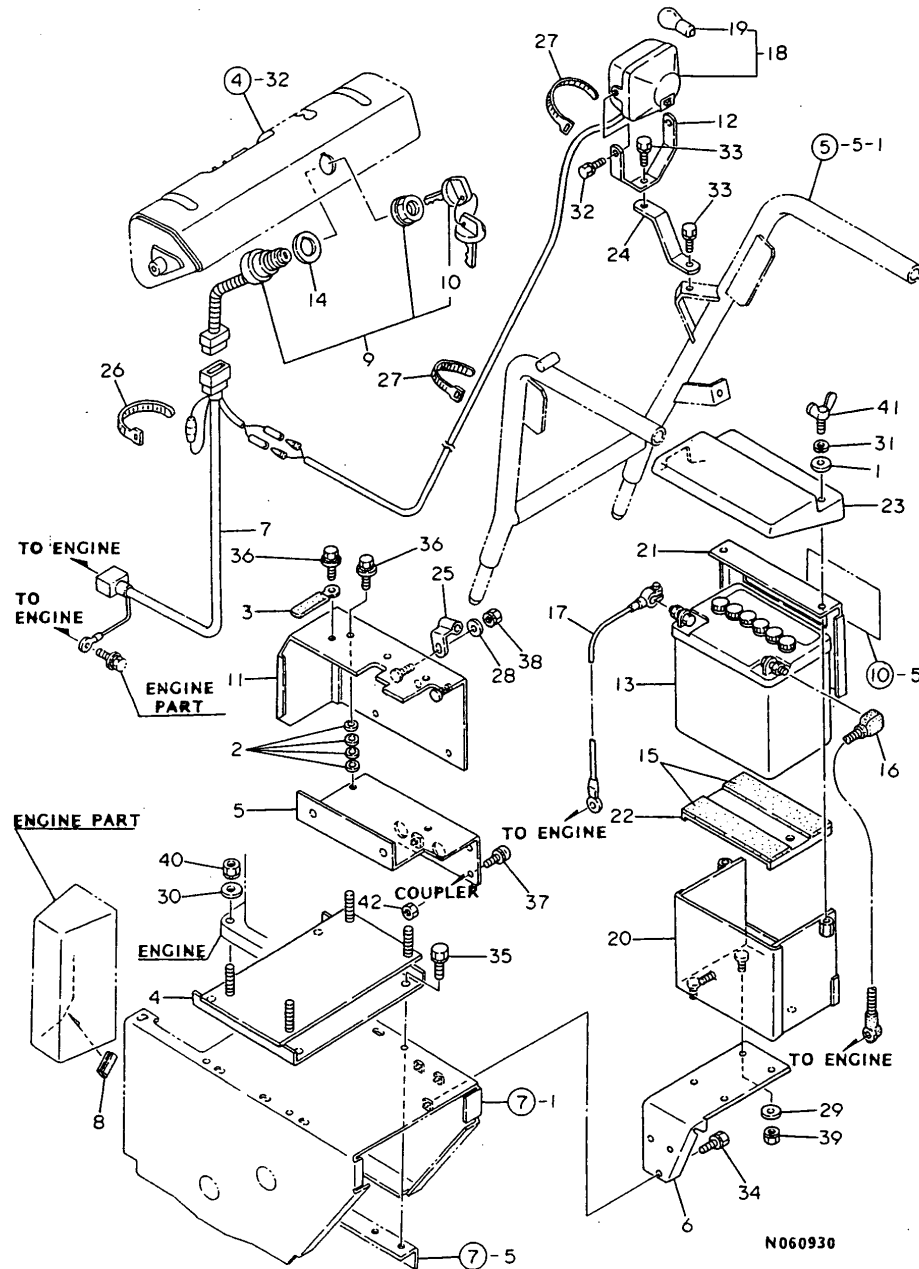
(A)=YSR100TE
(B)=YSR100TEHL
(C)=YSR100TEL

(D)=YSR100TSE(H)
(E)=
(F)=

REF.	LEV.	PARTS NO.	DESCRIPTION	QTY						I	R
				(A)	(B)	(C)	(D)	(E)	(F)		
1	1	1N1711-68100 (A=F810001) (B=F810001)	MARK,SAFETY CAUTION	1	1	1	1				W
2	1	1N1711-68110 (A=F810001) (B=F810001)	MARK B,SAFETY CAUT'N	1	1	1	1				W
3	1	1N1711-68120 (A=F810001) (B=F810001)	MARK,TRAVEL CLUTCH	1	1	1	1				W
4	1	1N1711-68130 (A=F810001) (B=F810001)	MARK,SNOW REM.CLUCH	1	1	1	1				W
5	1	1N1711-68140 (A=F810001) (B=F810001)	MARK,SNOW THROW.IND	1	1	1	1				W
6	1	1N1711-68150 (A=F810001) (B=F810001)	LABEL,CAUTION	1	1	1	1				W
7	1	1N1711-68160 (A=F810001) (B=F810001)	LABEL,BOLT REPLACMT	1	1	1	1				W
8	1	1N1711-68190 (A=F810001) (B=F810001)	MARK C "YANMAR"	2	2	2	2				W
9	1	1N1711-68200 (A=F810001) (B=F810001)	MARK,DEADMAN CLUCH	1	1	1	1				W
10	1	1N1711-68210 (A=F810001) (B=F810001)	LABEL,CHOKE	1	1	1	1				W
11	1	1N1711-68220 (A=F810001) (B=F810001)	MARK,OIL CHECK	1	1	1	1				W
12	1	1N1711-68240 (A=F810001) (B=F810001)	MARK B,TRAVEL CLUTCH	1	1	1	1				W
13	1	1N1711-68250 (A=F810001) (B=F810001)	MARK B,SNOW REM,CLTC	1	1	1	1				W
14	1	1N1711-68260 (A=F810001) (B=F810001)	MARK,AUGER CAUTION	1	1	1	1				W
15	1	1N1711-68270 (A=F810001) (B=F810001)	MARK,FUEL TANK	1	1	1	1				W
16	1	1N1711-68280 (A=F810001) (B=F810001)	MARK,CHUTE CAUTION	1	1	1	1				W
17	1	1N1711-68290 (A=F810001) (B=F810001)	MARK,SAFETY CAUTION	1	1	1	1				W
18	1	1N1711-68300 (A=F810001) (B=F810001)	MARK C,TRAVEL CLUTCH	1	1	1	1				W
19	1	1N1711-68310 (A=F810001) (B=F810001)	MARK,SNOW THROW.IND	1	1	1	1				W
20	1	1N1711-68320 (A=F810001) (B=F810001)	LABEL C,BOLT REPLM'T	1	1	1	1				W
21	1	1N1711-68340 (A=F810001) (B=F810001)	MARK,ACCELERATOR	1	1	1	1				W
22	1	1N1711-68350 (A=F810001) (B=F810001)	MARK C,DEADMAN CLTCH	1	1	1	1				W
23	1	1N1711-68360 (A=F810001) (B=F810001)	LABEL C,CHOKE	1	1	1	1				W
24	1	1N1711-68380 (A=F810001) (B=F810001)	MARK C,SNOW REW,CLTC	1	1	1	1				W

Fig.19. ENGINE & ELECTRICAL PARTS 3(ADDED GROUP)

19. ENGINE & ELECTRICAL PARTS 3(ADDED GROUP)



(A)=YSR100TE (D)=YSR100TE(H)

(B)=YSR100TEHL (E)=

(C)=YSR100TEL (F)=

REF.	LEV.	PARTS NO.	DESCRIPTION	QTY						I	R
				(A)	(B)	(C)	(D)	(E)	(F)		
1	1	1J3999-02010	WASHER 6						2		
2	1	1J3999-02020	WASHER 8						8		
3	1	1N1710-32600	CLAMP 8X70						1		
4	1	1N1960-36150	BASE,ENGINE						1		
4-1	1	1N1960-36151	BASE, ENGINE						1		R
(D=FXXXXXX)											
5	1	1N1960-51100	STAY,COVER						1		
6	1	1N1960-51150	MOUNT,BATTERY						1		
7	1	1N1960-51160	HARNISS.100TS						1		
8	1	1N1721-51230	MOLDINGS 30,HOSE						3		
9	1	1N1711-51250	SWITCH COMPL.,KEY						1		
10	2	1N1711-51240	KEY						1		
11	1	1N1720-51352	COVER,STARTING MOTOR						1		
12	1	1N1711-51390	STAY,HEADLIGHT						1		
13	1	1N1720-51490	BATTERY D						1		
14	1	1N1710-51520	SPACER,SWITCH						1		
15	1	1N1720-51550	RUBBER,LINING						2		
16	1	1N1720-51671	CABLE D,BATTERY POS.						1		
17	1	1N1720-51682	CABLE D,BATTERY GND.						1		
18	1	1N1711-51850	HEADLIGHT COMPL.						1		
19	2	1N1711-51860	LAMP 12V-15W G23						1		
20	1	1N1721-52030	CASE D,BATTERY						1		
21	1	1N1721-52070	PLATE D,KEEP						1		
22	1	1N1721-52090	SEAT,BATTERY						1		
23	1	1N1721-52120	COVER(A80X),BATTERY						1		
24	1	1N1721-52470	STAY TD,HEADLIGHT						1		
25	1	1N1710-73340	GUIDE,HANDLE						1		
26	1	1E6102-84970	BAND 140,WIRE LOCK						1		
27	1	1E6102-84970	BAND 140,WIRE LOCK						2		
28	1	22137-060000	WASHER 6, POLISHED						1		
29	1	22137-080000	WASHER 8, POLISHED						3		
30	1	22137-100000	WASHER 10,POLISHED						4		
31	1	22217-060000	SPRING WASHER 6						2		
32	1	26016-060164	BOLT 6X16 W/L.W.						2		
33	1	26016-080164	BOLT M 8X 16						2		
34	1	26016-080164	BOLT M 8X 16						3		
35	1	26016-100204	BOLT M10X 20						4		
36	1	26018-060124	BOLT M 6X 12						3		
37	1	26022-040122	SCREW M 4X 12						2		
38	1	26051-060002	NUT M 6						1		
39	1	26051-080002	NUT M 8						3		
40	1	26051-100002	NUT M10						4		
41	1	26647-060402	BOLT M6X40,WING						2		
42	1	26717-040002	NUT 14						2		

Part Number Index

All parts are stipulated in the order of part numbers.

(Depending on the area in which the part is used.)

This index will display the location of the part according to each part number.

PARTS No. INDEX

PARTS No.	Fig.	Ref.No.
160110-92610	16	1
160110-92700	16	2
160110-92710	16	3
1A1040-58160	4	27
1A1140-58050	4	26
1E6025-65310	4	30
1E6102-84970	5	18
		35
	9	10
	19	26
		27
1E6460-83400	4	35
		36
	9	9
1F1150-64270	4	29
1F1150-92000	17	1
1J3000-20020	8	2
1J3999-02000	11	15
1J3999-02010	11	1
	12	1
		22
	19	1
1J3999-02020	8	1
	19	2
1N1570-12200	1	7
1N1570-12280	1	10
1N1570-21070	3	10
1N1570-21090	3	12
1N1570-21100	3	13
1N1570-21170	3	14
1N1570-21200	3	15
1N1570-21300	3	18
1N1570-21600	3	20
1N1570-32290	4	3
		4
1N1570-32320	4	6
1N1570-32620	5	2
1N1570-32760	4	9
1N1570-32770	4	10
1N1570-32950	4	12
		13
1N1570-36351	7	10
1N1570-38000	8	3
1N1570-38010	8	6
1N1570-38020	8	7
1N1570-38050	8	10
1N1570-38090	8	11
1N1570-38130	8	12
1N1570-38150	8	13
1N1570-38180	8	14

PARTS No.	Fig.	Ref.No.
1N1570-38200	11	2
1N1570-38210	8	15
	11	3
1N1570-73150	12	21
1N1570-73160	12	5
1N1570-73180	12	7
1N1570-73260	5	9
1N1570-73270	12	9
1N1570-74050	13	5
1N1570-74110	13	7
1N1570-74120	13	8
1N1570-74130	13	9
1N1570-74140	13	10
1N1570-74150	13	11
1N1570-75151	14	4
1N1710-12240	1	9
1N1710-12320	1	12
1N1710-12400	1	14
1N1710-21001	3	1
1N1710-21010	3	4
1N1710-21021	3	6
1N1710-21022	3	6 -1
1N1710-21320	3	19
1N1710-32150	4	1
1N1710-32180	9	1
1N1710-32280	4	2
1N1710-32380	4	7
1N1710-32600	4	8
	9	19
	19	3
1N1710-32851	4	11
1N1710-32852	4	11 -1
1N1710-32960	4	14
1N1710-32980	4	15
1N1710-33000	4	16
1N1710-33050	4	17
1N1710-33080	4	18
1N1710-33150	4	19
1N1710-33151	4	19 -1
1N1710-33230	5	32
1N1710-36370	7	11
1N1710-38000	8	4
1N1710-38020	8	8
1N1710-38040	8	9
1N1710-51520	19	14
1N1710-67150	10	2
1N1710-71060	11	6
1N1710-71071	11	7
1N1710-73140	5	8
1N1710-73311	5	10

PARTS No.	Fig.	Ref.No.
1N1710-73340	9	22
	19	25
1N1710-74020	13	3
1N1710-74021	13	3 -1
1N1710-75041	14	3
1N1710-82000	5	11
1N1710-82020	5	12
1N1710-82041	5	13
1N1710-82042	5	13 -1
1N1710-82043	5	13 -2
1N1710-82081	4	31
1N1710-82082	4	31 -1
1N1710-82110	5	14
1N1710-82111	5	14 -1
1N1710-82120	5	15
1N1710-82131	5	16
1N1710-82140	5	17
1N1710-82250	1	17
1N1710-82251	2	25
1N1710-82401	4	32
1N1710-82421	4	33
1N1710-82422	4	33 -1
1N1710-82441	4	34
1N1711-12030	2	9
1N1711-12200	2	10
1N1711-13200	1	33
1N1711-13201	1	33 -1
1N1711-32790	5	3
1N1711-35000	5	4
1N1711-35001	5	4 -1
1N1711-35130	5	5
1N1711-35131	5	5 -1
1N1711-35200	4	20
1N1711-35210	4	21
1N1711-35211	4	21 -1
1N1711-35220	4	22
1N1711-35350	5	33
1N1711-35470	4	34 -1
1N1711-35520	5	36
1N1711-51240	19	10
1N1711-51250	19	9
1N1711-51390	9	18
	19	12
1N1711-51400	9	4
1N1711-51770	9	3
1N1711-51790	9	5
1N1711-51850	9	6
	19	18
1N1711-51860	9	7
	19	19

PARTS No.	Fig.	Ref.No.
1N1711-68100	18	1
1N1711-68110	18	2
1N1711-68120	18	3
1N1711-68130	18	4
1N1711-68140	18	5
1N1711-68150	18	6
1N1711-68160	18	7
1N1711-68170	10	6
1N1711-68190	18	8
1N1711-68200	18	9
1N1711-68210	18	10
1N1711-68220	18	11
1N1711-68240	18	12
1N1711-68250	18	13
1N1711-68260	18	14
1N1711-68270	18	15
1N1711-68280	18	16
1N1711-68290	18	17
1N1711-68300	18	18
1N1711-68310	18	19
1N1711-68320	18	20
1N1711-68330	10	3
1N1711-68340	18	21
1N1711-68350	18	22
1N1711-68360	18	23
1N1711-68380	18	24
1N1711-71100	11	8
1N1711-73080	12	3
1N1711-73140	12	4
1N1711-73170	12	6
1N1711-73200	12	8
1N1711-73700	12	22 -1
1N1711-74000	13	11 -1
1N1711-74010	13	24
1N1720-12071	1	3
1N1720-12080	1	4
1N1720-12081	1	4 -1
1N1720-12110	1	6
1N1720-12200	1	8
1N1720-12300	1	11
1N1720-21061	3	8
1N1720-21062	3	8 -1
1N1720-21071	3	11
1N1720-21210	3	16
1N1720-21211	3	16 -1
1N1720-21230	3	17
1N1720-21231	3	17 -1
1N1720-21240	3	13 -1
1N1720-36100	7	2
1N1720-36120	7	5

PARTS No. INDEX

PARTS No.	Fig.	Ref.No.
1N1720-36200	7	7
1N1720-36220	7	8
1N1720-36221	7	8 -1
1N1720-36250	7	9
1N1720-51352	19	11
1N1720-51490	19	13
1N1720-51550	19	15
1N1720-51671	19	16
1N1720-51682	19	17
1N1720-82001	11	12
1N1720-82002	11	12 -1
1N1720-82021	11	13
1N1720-82022	11	13 -1
1N1721-12250	2	12
1N1721-12560	1	15
1N1721-12700	1	16
1N1721-13150	2	6
1N1721-13160	2	7
1N1721-21000	3	2
1N1721-21001	3	2 -1
1N1721-21010	3	5
1N1721-34140	4	5
1N1721-35000	5	6
1N1721-35001	5	6 -1
1N1721-35040	5	7
1N1721-36110	7	4
1N1721-36111	7	4 -1
1N1721-36120	7	6
1N1721-36121	7	6 -1
1N1721-51230	9	25
	19	8
1N1721-52030	19	20
1N1721-52070	19	21
1N1721-52090	19	22
1N1721-52120	19	23
1N1721-52470	9	8
	19	24
1N1721-55070	5	42
1N1721-74050	13	6
1N1721-74051	13	6 -1
1N1721-76000	15	1
1N1960-12000	1	1
1N1960-12010	2	1
1N1960-12050	1	2
1N1960-12060	1	13
1N1960-12100	1	5
1N1960-12101	1	5 -1
1N1960-12150	2	2
1N1960-12170	2	3
1N1960-12200	2	11

PARTS No.	Fig.	Ref.No.
1N1960-12250	2	4
1N1960-12280	2	5
1N1960-12350	2	13
1N1960-12400	2	24
1N1960-12450	1	34
1N1960-21000	3	3
1N1960-21050	3	7
1N1960-21060	3	9
1N1960-32000	5	1
1N1960-32001	5	1 -1
1N1960-32050	9	21
1N1960-32100	5	31
1N1960-32110	4	23
1N1960-32150	4	25 -1
1N1960-36000	6	1
1N1960-36050	7	1
1N1960-36051	7	1 -1
1N1960-36100	7	3
1N1960-36150	9	2
	19	4
1N1960-36151	9	2 -1
	19	4 -1
1N1960-38000	8	5
1N1960-51100	19	5
1N1960-51150	19	6
1N1960-51160	19	7
1N1960-67010	10	1
1N1960-67020	10	4
1N1960-67100	10	5
1N1960-71000	11	4
1N1960-71030	11	5
1N1960-71100	11	9
1N1960-71101	11	9 -1
1N1960-71500	11	33
1N1960-71550	11	10
1N1960-71551	11	10 -1
1N1960-71560	11	11
1N1960-71561	11	11 -1
1N1960-73000	12	2
1N1960-73001	12	2 -1
1N1960-73500	12	10
1N1960-73501	12	10 -1
1N1960-74500	13	1
1N1960-74501	13	1 -1
1N1960-74502	13	1 -2
1N1960-74510	13	2
1N1960-74511	13	2 -1
1N1960-74512	13	2 -2
1N1960-74520	13	4
1N1960-74530	13	17

PARTS No.	Fig.	Ref.No.
1N1960-74540	13	18
1N1960-75000	14	1
1N1960-75020	14	2
1S0139-42150	4	24
		25
		25 -2
1S6002-61160	4	28

PARTS No.	Fig.	Ref.No.
-----------	------	---------



YANMAR CO., LTD.